

Passenger Trains Create a Better World



For every airplane trip between DC and NYC, there are 3 trips taken on an Amtrak train.

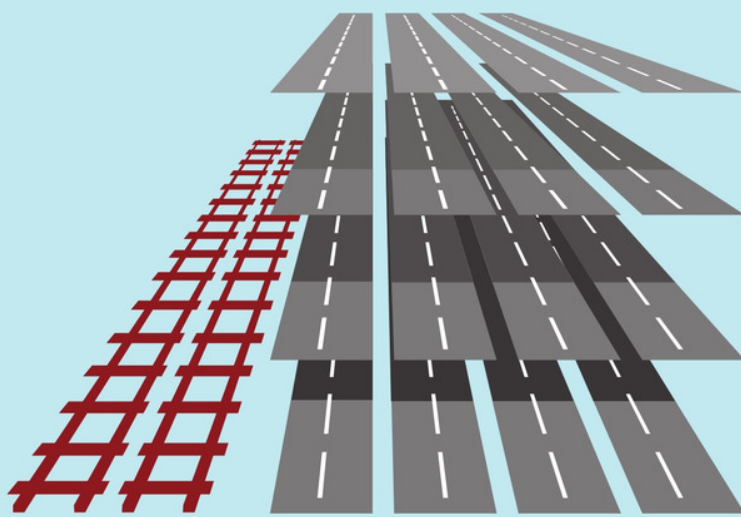


173 million Americans live within 25 miles of an Amtrak station.

51% Increase in Passengers



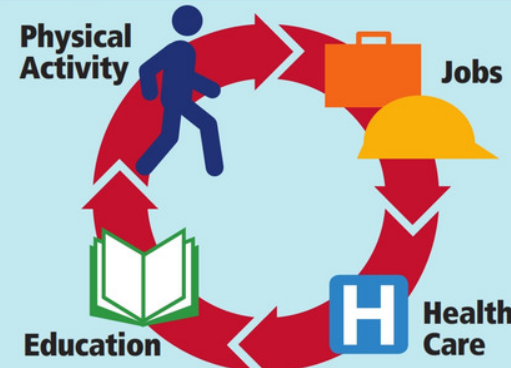
Greater Mobility



A two-track railroad can carry as many people in an hour as would require 16 lanes of highway if each person drove solo.

Greater Efficiency

Standard of Living



Transit oriented communities connect people to opportunities.



The amount of time stuck in traffic by the average U.S. commuter was 38 hours per year, up from 16 hours in 1982.



Amtrak removes 8 million cars from the highways and eliminates the need for 50,000 fully loaded airplanes.



\$1 to \$3

Passenger trains are economic engines in their own right, that return nearly three dollars to local communities for every one dollar of federal investment.



\$121 billion in annual cost to the US economy due to traffic congestion.

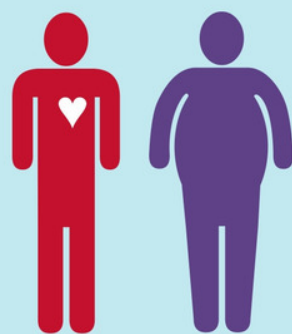
WITH THE U.S. POPULATION EXPECTED TO RISE BY 100 MILLION AMERICANS BY THE YEAR 2050, HOW WILL THEY GET AROUND? WE CAN'T PAVE OUR WAY OUT OF THIS PROBLEM.



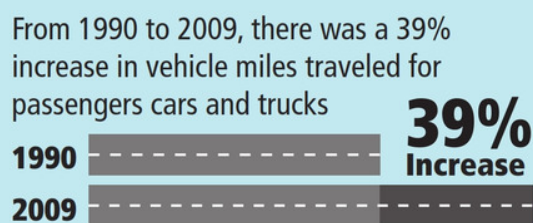
2.9 Billion

Traffic wastes 2.9 billion gallons of fuel each year

Economic Development



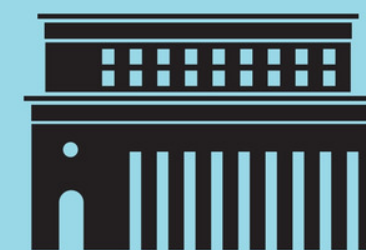
Transit reliance cuts chances of coronary heart diseases, adult diabetes, and becoming obese by 50% or more.



Risk of obesity increases 6% for every additional hour spent in a car, but decreases 5% every kilometer walked



Healthy Lifestyle



New Jobs

20,000 JOBS

The U.S. Department of Commerce estimates that every \$1 billion invested in rail directly creates 20,000 jobs.

400,000 JOBS

The rail sector accounts for nearly 400,000 well-paid, trained jobs in America—jobs that cannot be sent overseas.



1200 G. Street, NW, Suite 240
Washington, DC 20005
202-408-8362 narprail.org

