

11. Stations as Urban Agoras

(The Rebirth of the Railway Station : Phase 3)

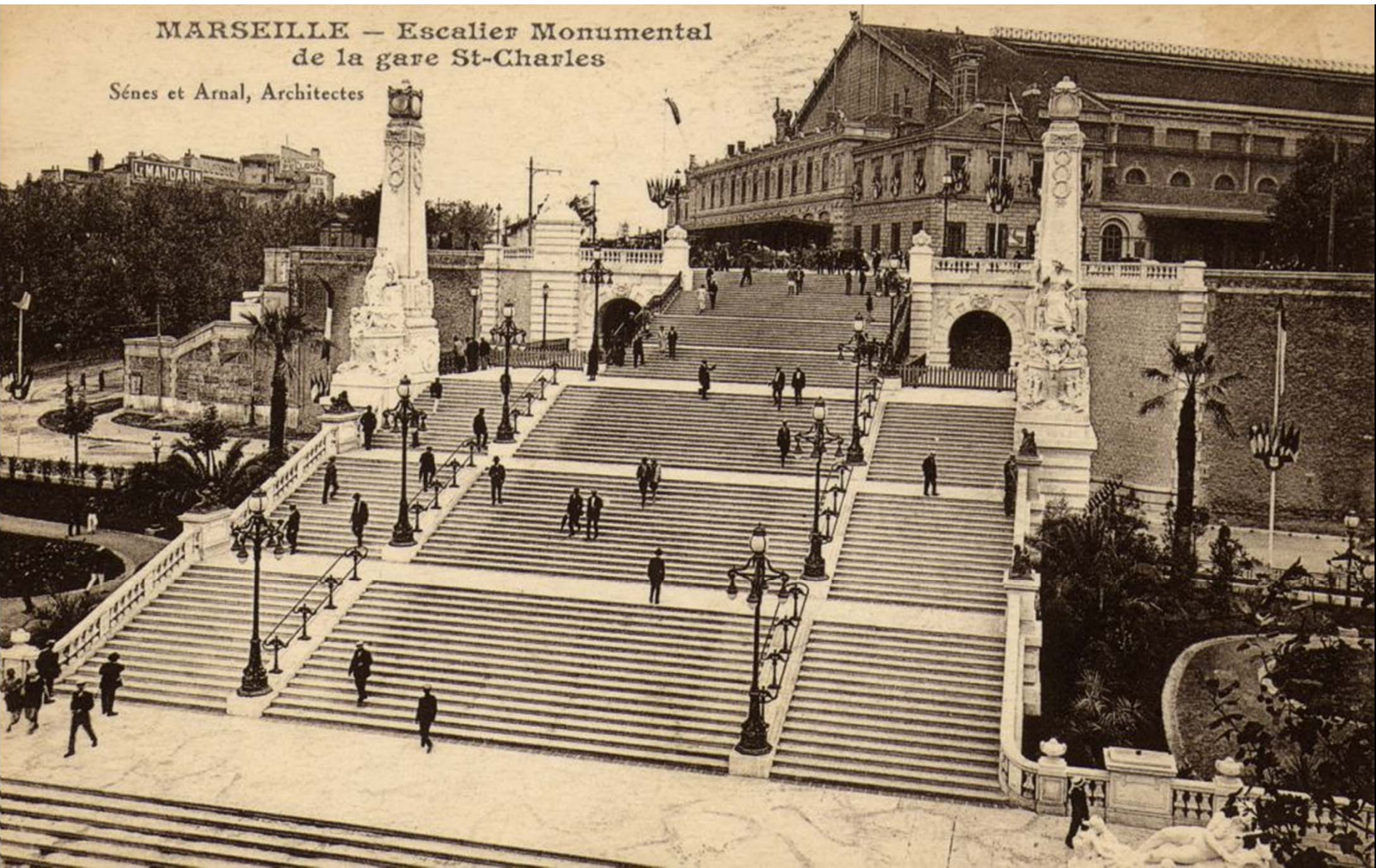
Marseille, Saint-Charles Multimodal Hub 2001





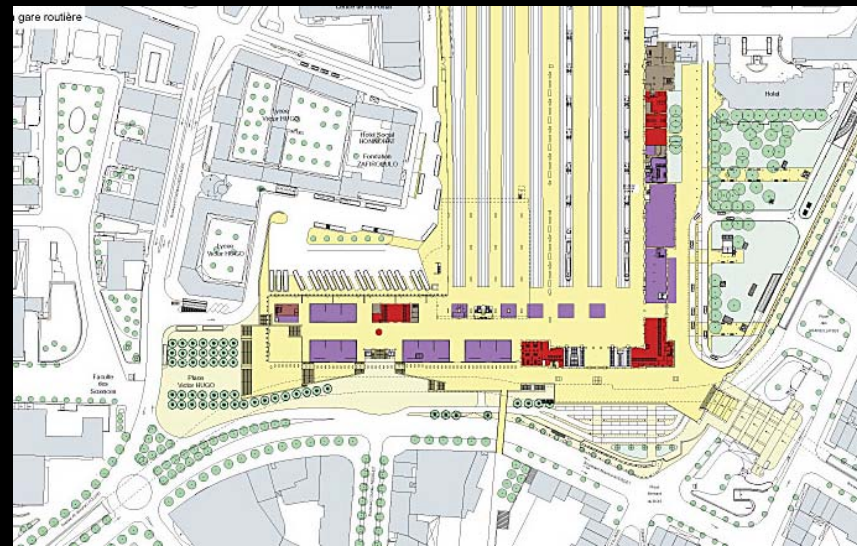
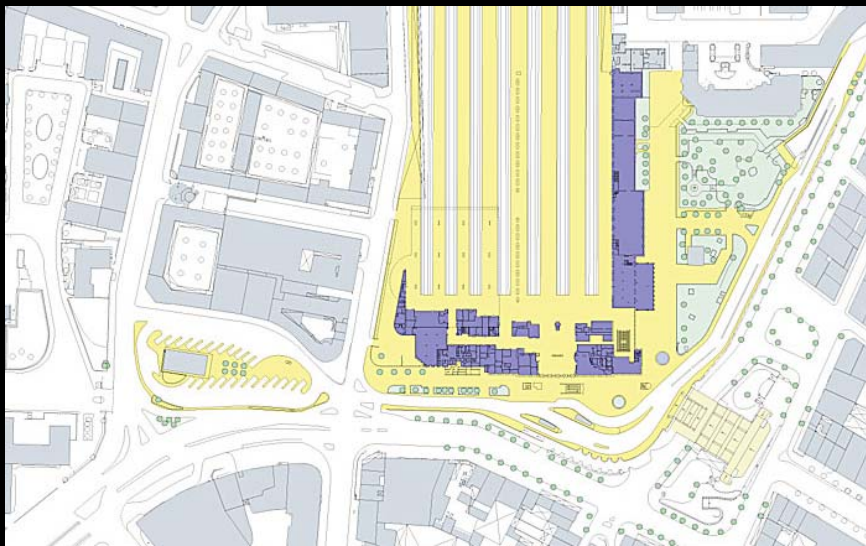
MARSEILLE — Escalier Monumental
de la gare St-Charles

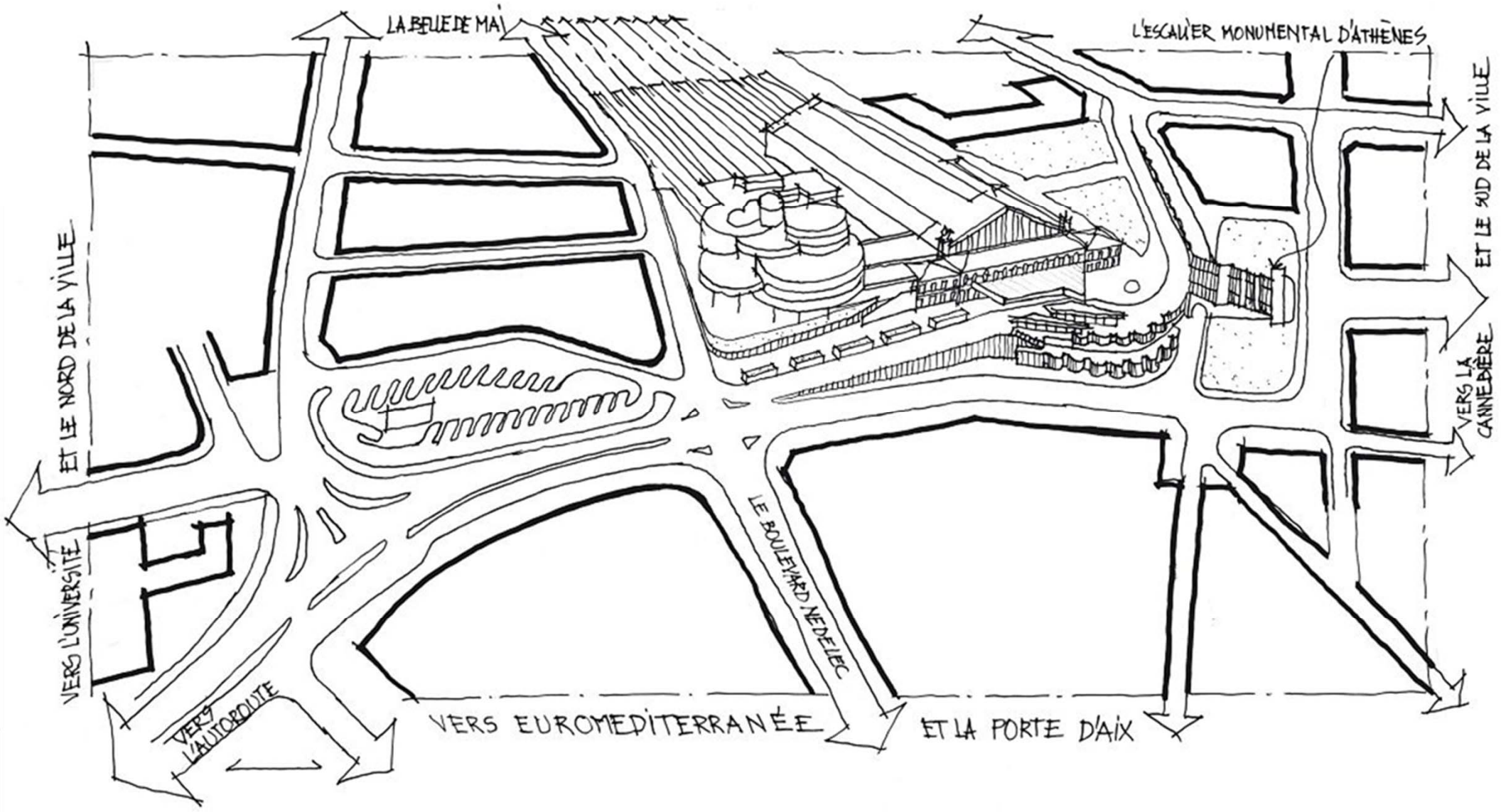
Sénes et Arnal, Architectes

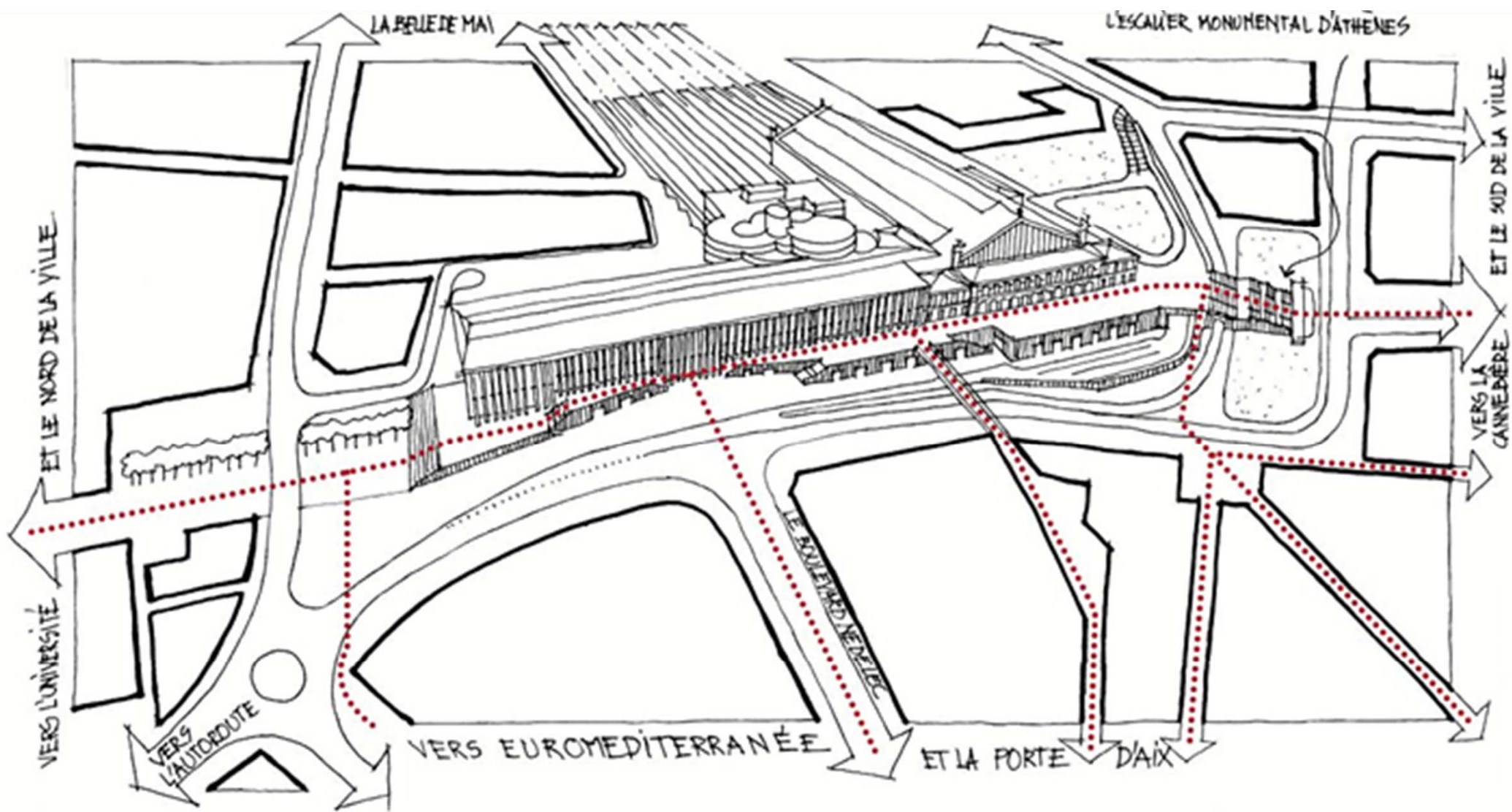


















**CONSEIL
GENERAL**
BOUCHES-DU-RHÔNE



Région

Provence
Alpes
Côte d'Azur



Départs Départs - Partants

Destination	Train	Quai
Nice Ville	Frederic & Raphael Express	1
Marseille	Marseille	2
Arles	Arles	3
Avignon	Avignon	4
Paris Lyon	Paris Lyon	5

Arrivées Arrivées - Arrivés

Appareil momentanément Hors Service
Veuillez nous en excuser.

départ

Information

JEU EXCLUSIF
CARTE DE PULLERDORF

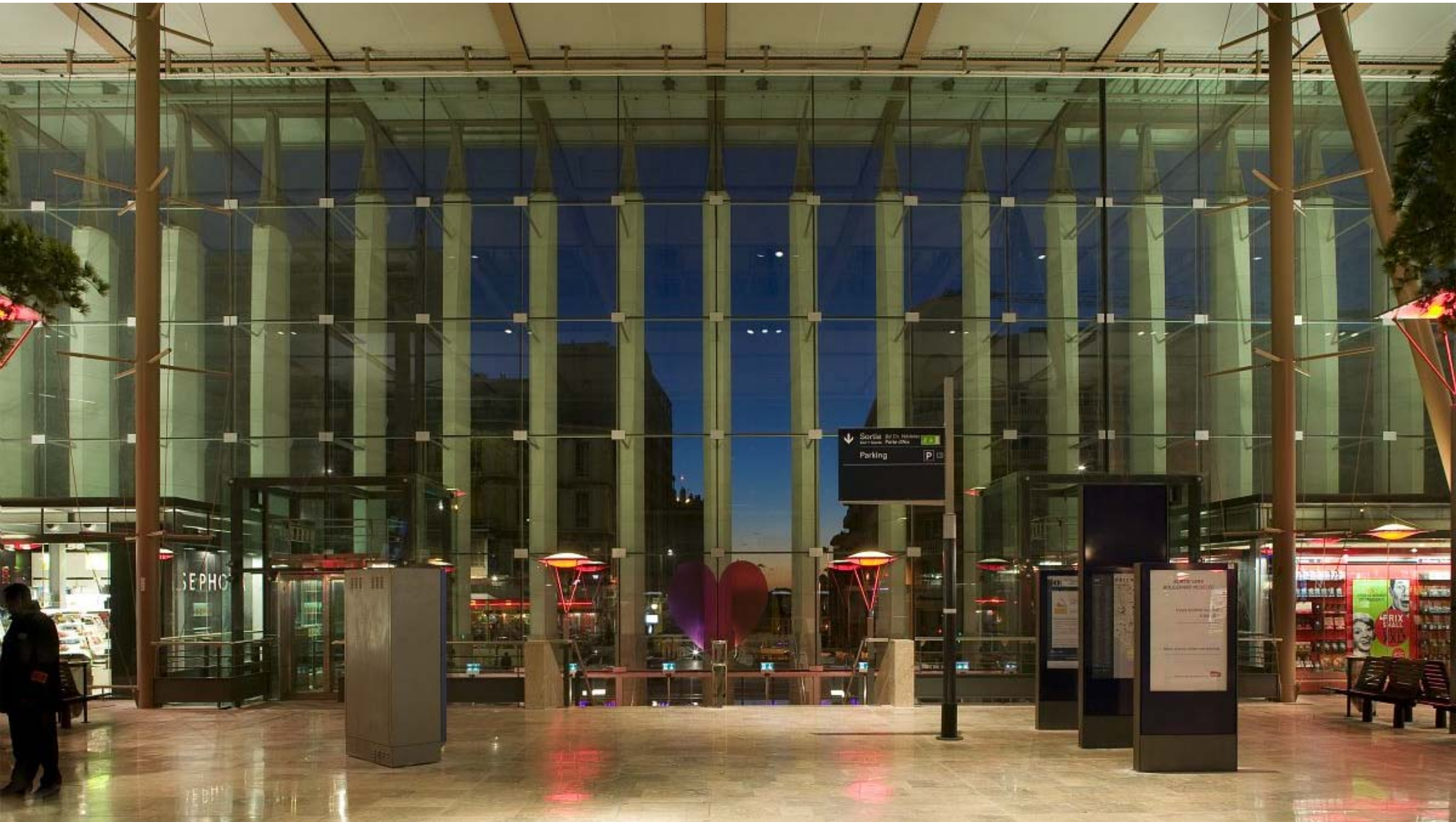
PERSEPOLIS















Marseille Saint- Charles Station Redevelopment

Project Cost: €95 Million

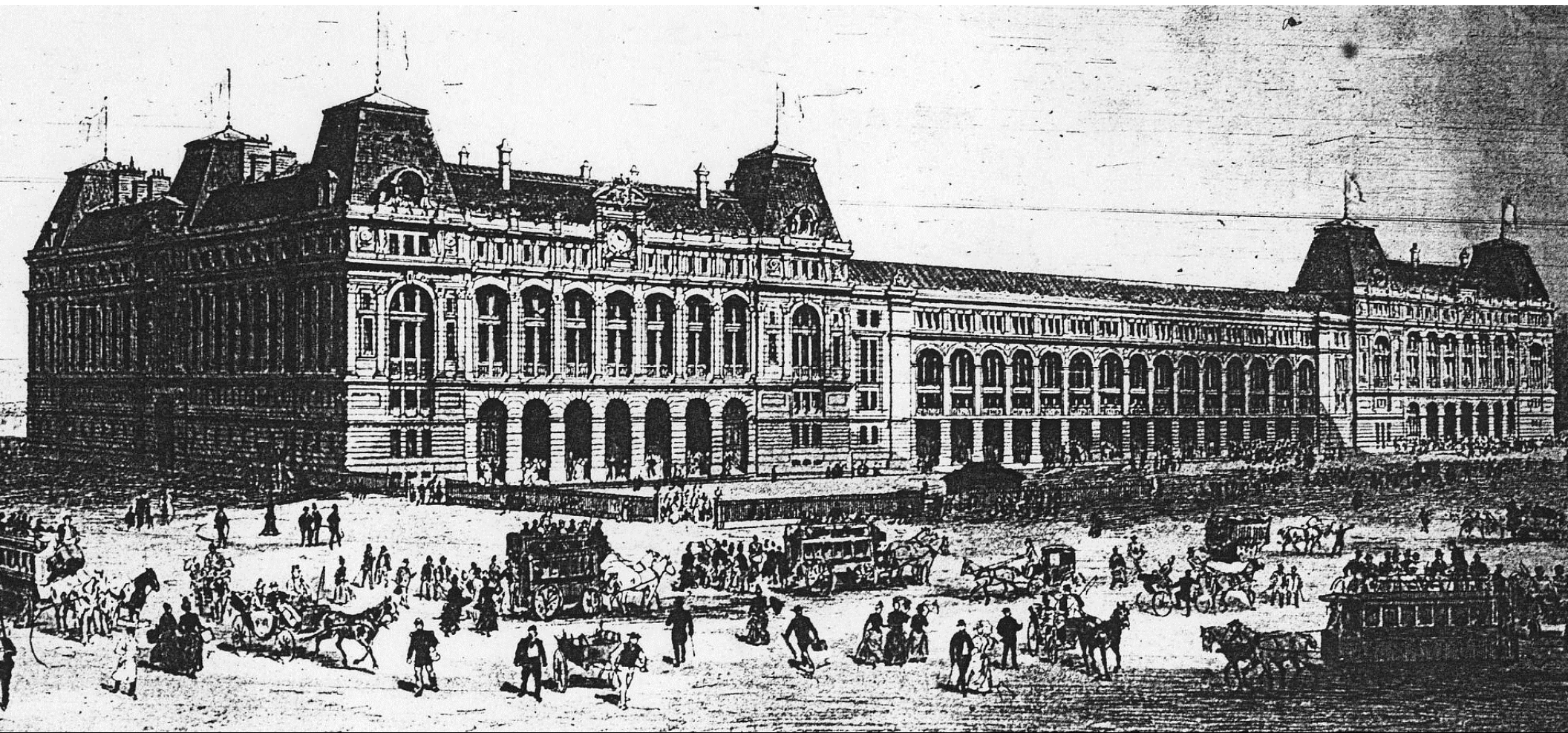
- **MPM Urban Community (Marseille Metropolitan Authority)** **21.6%**
- **Bouches de Rhône Department** **8.5%**
- **PACA Regional Council (Provence, Alpes, Côte d'Azur)** **16.5%**
- **French Government** **2.6%**
- **Euromediterrannée (a government-established development enterprise)** **13.2%**
- **European Regional Development Fund** **11.5%**
- **French Railways, SNCF** **26.1%**

**Saint-Lazare
Multimodal Hub
2001**

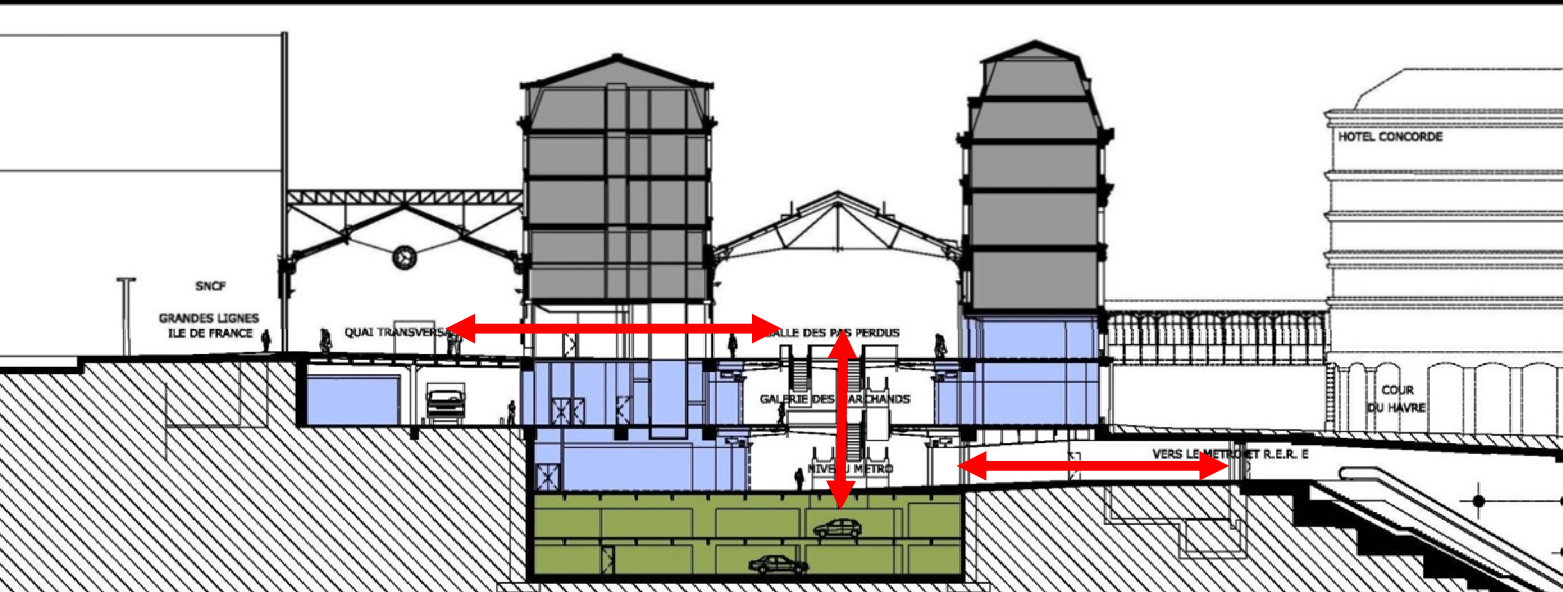
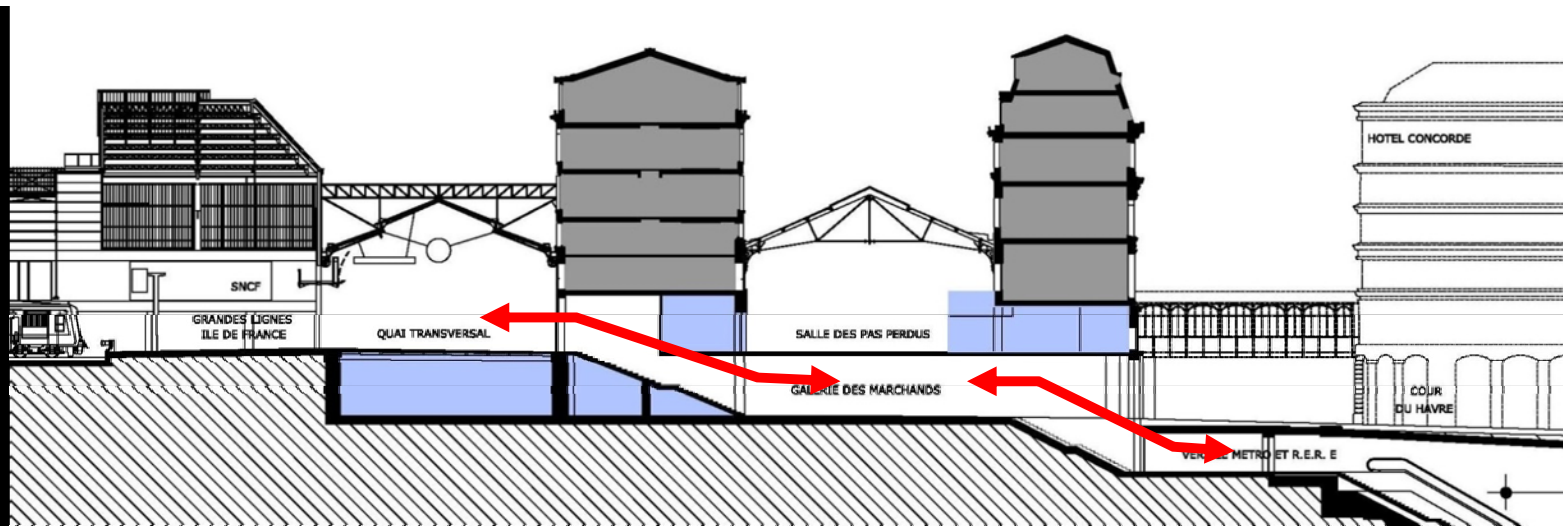






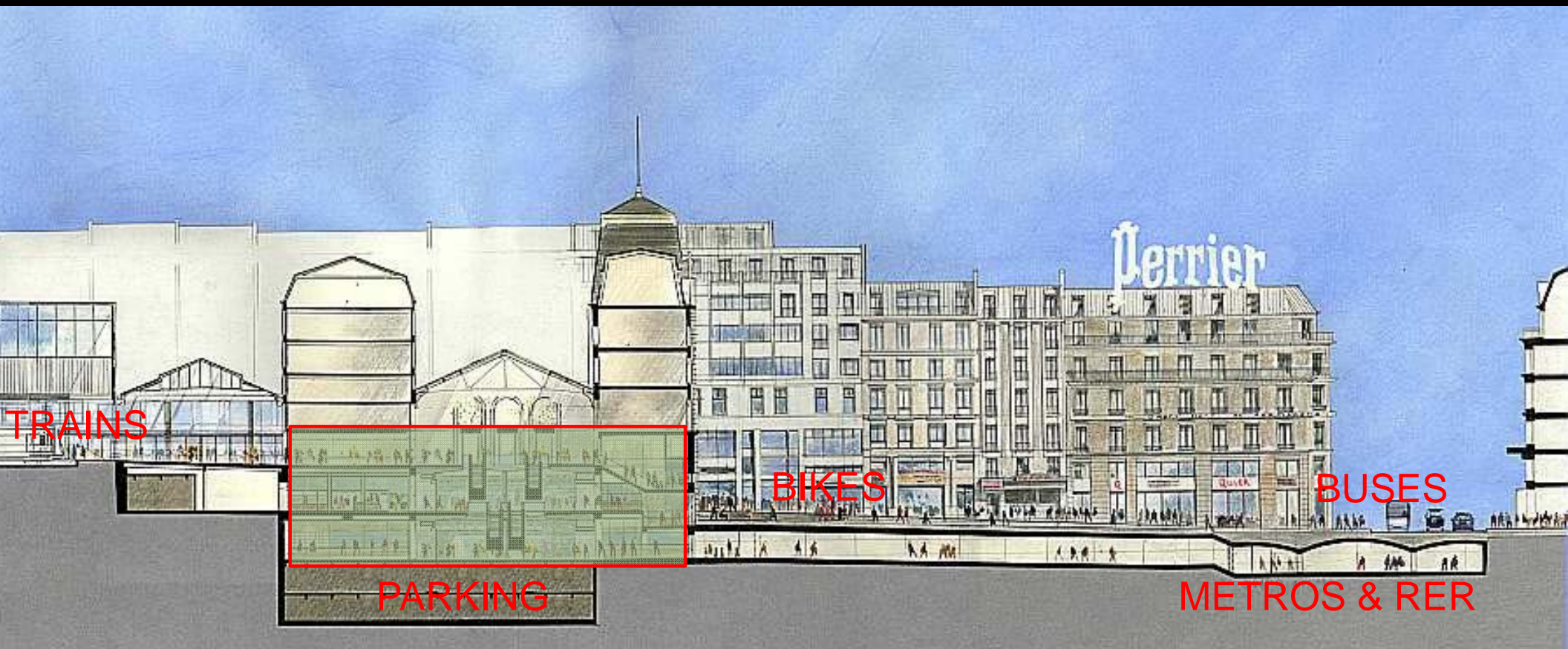




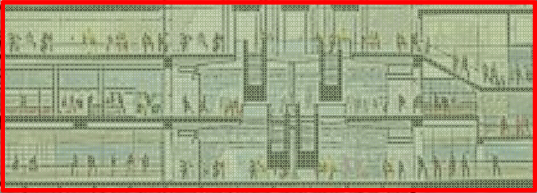








TRAINS



PARKING

BIKES

BUSES

METROS & RER

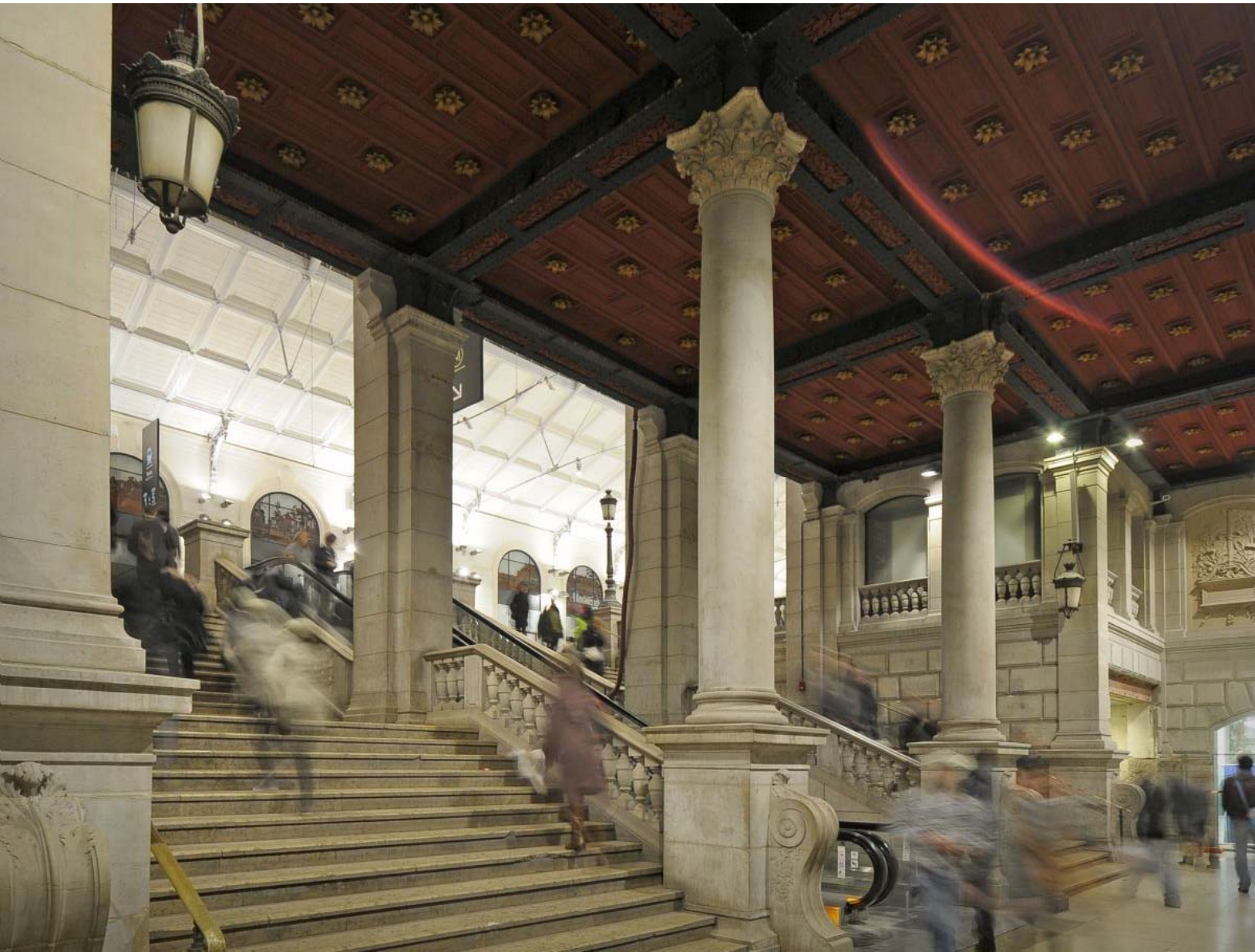






Paris Saint-Lazare







Sortie
Exit • Salida

Taxis

BUS

RER

M

↓

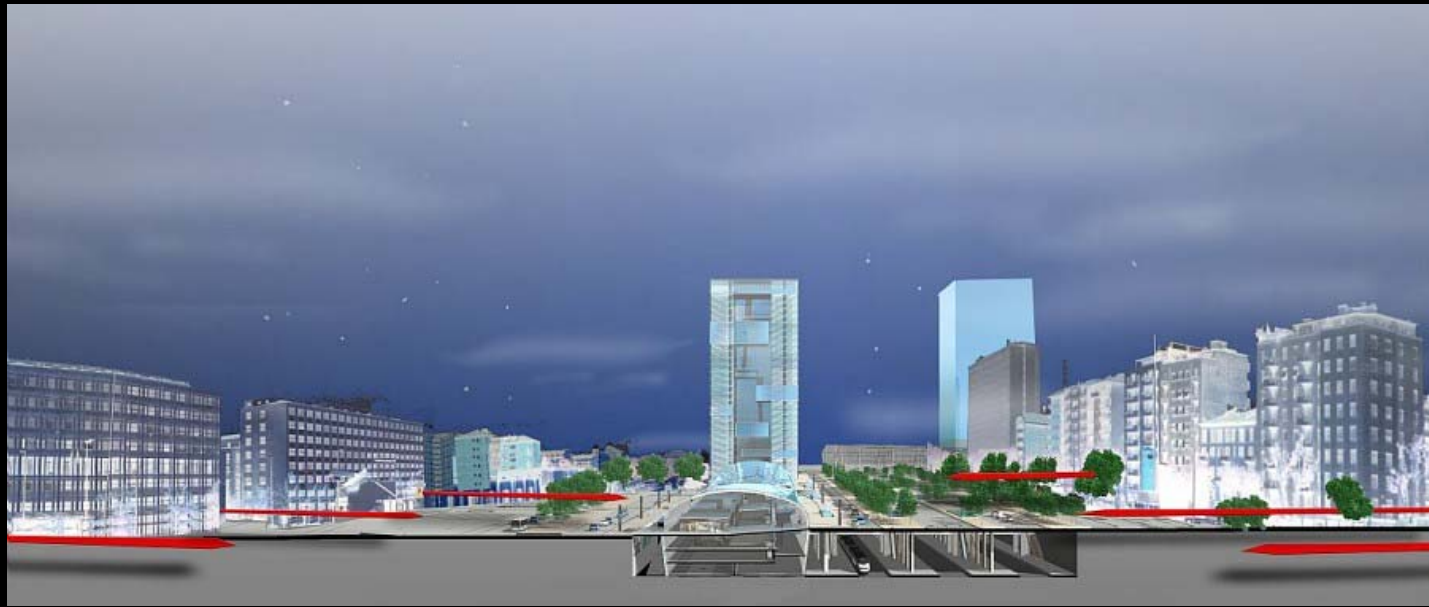
Trains
16:21
→

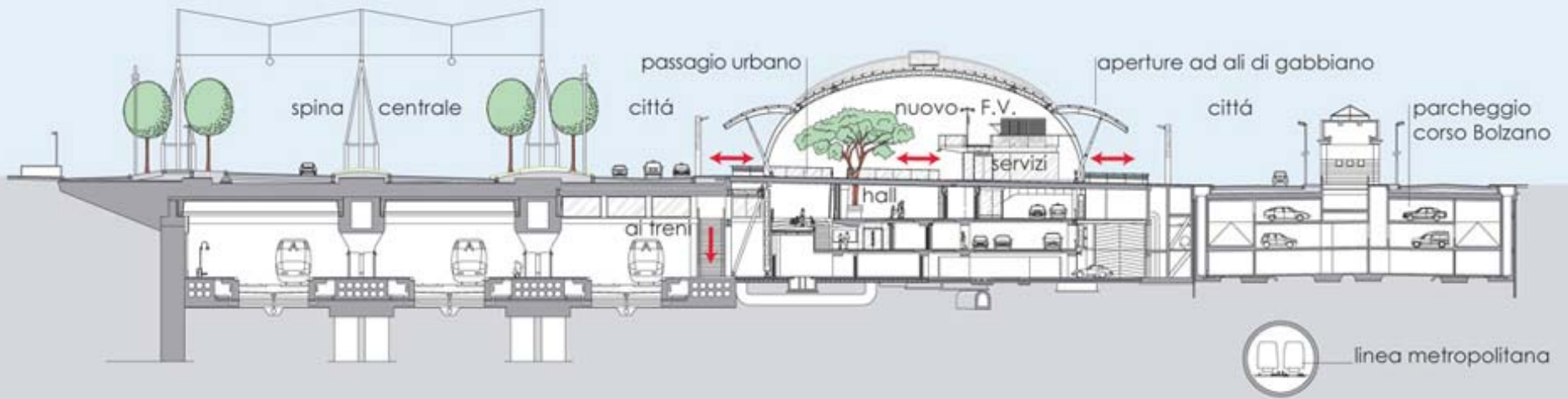
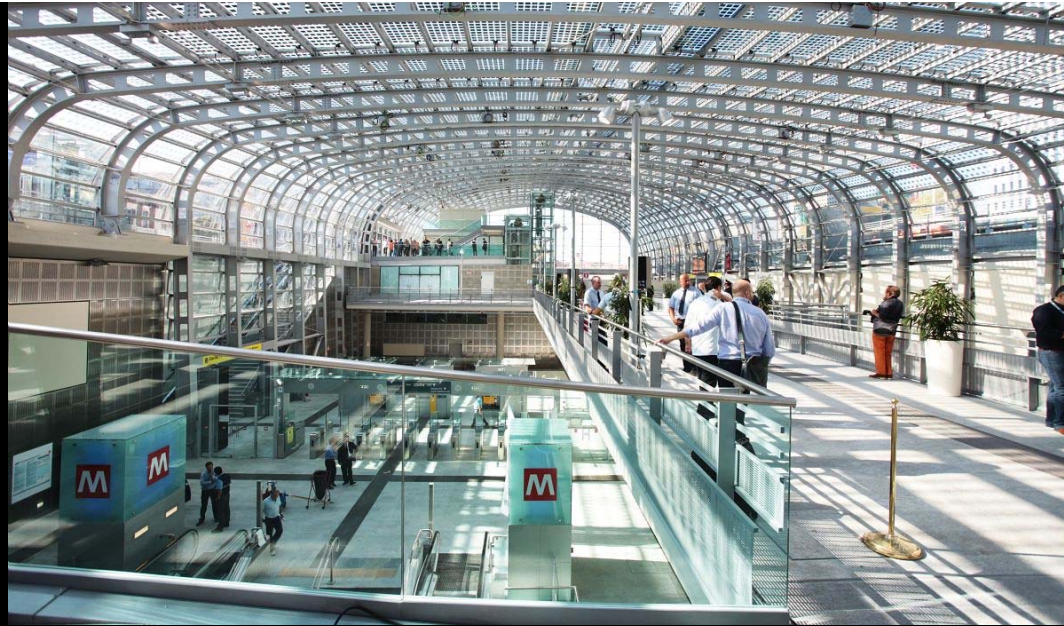
Paris Saint-Lazare

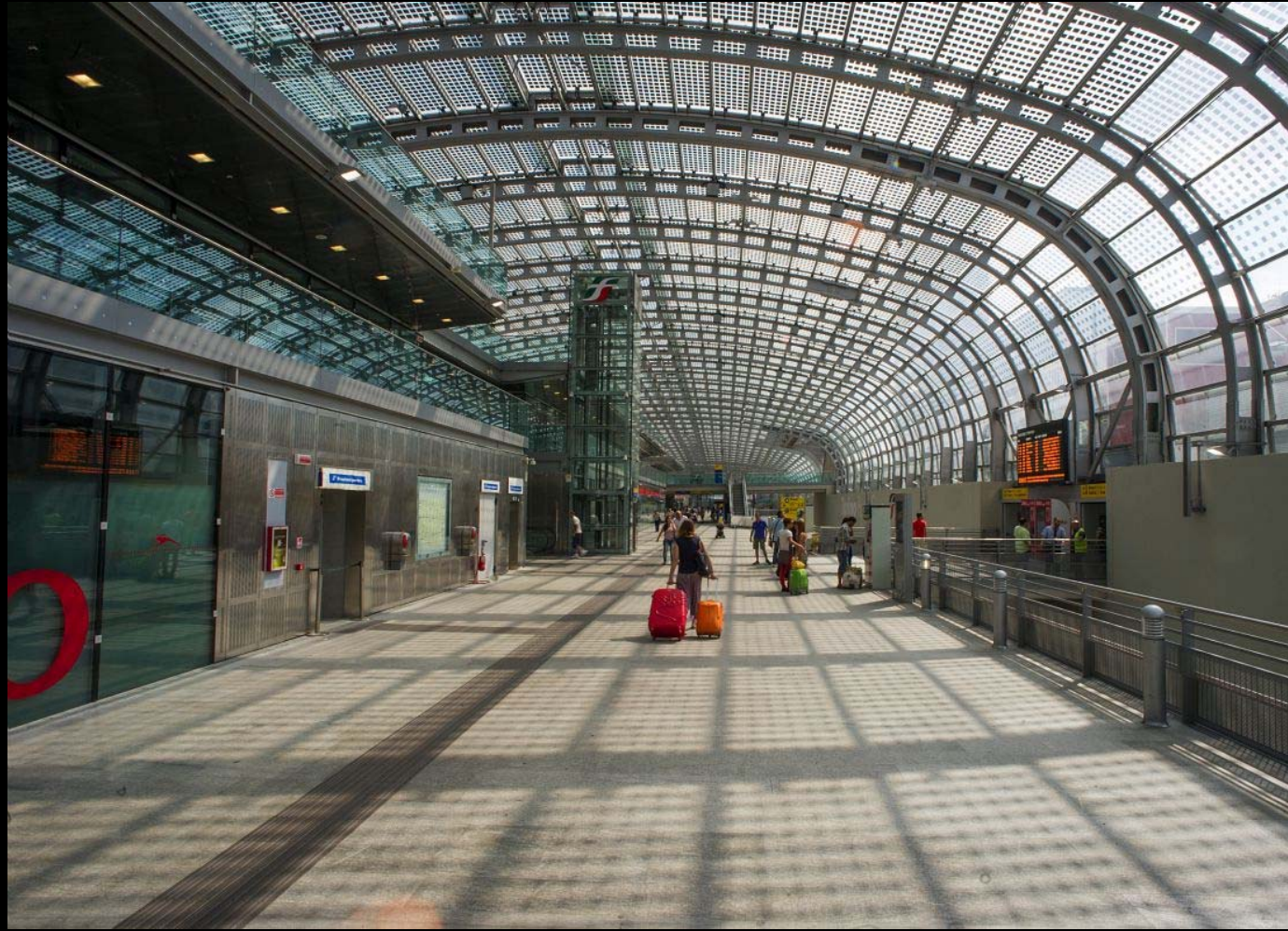


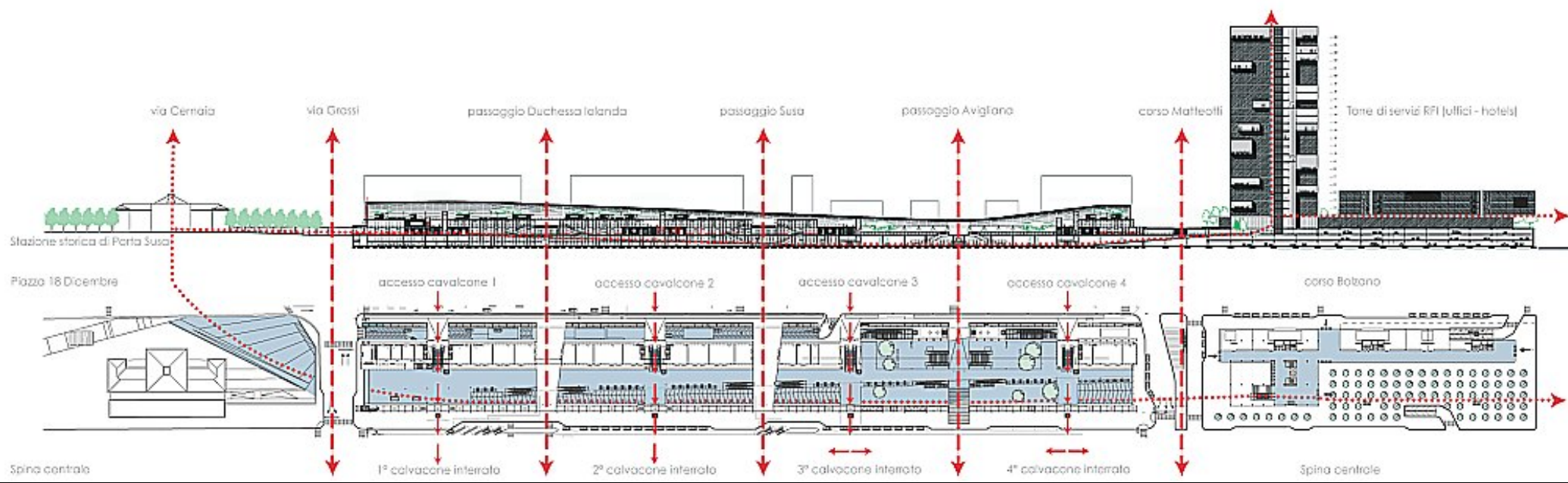
Porta Suza Railway Station 2014





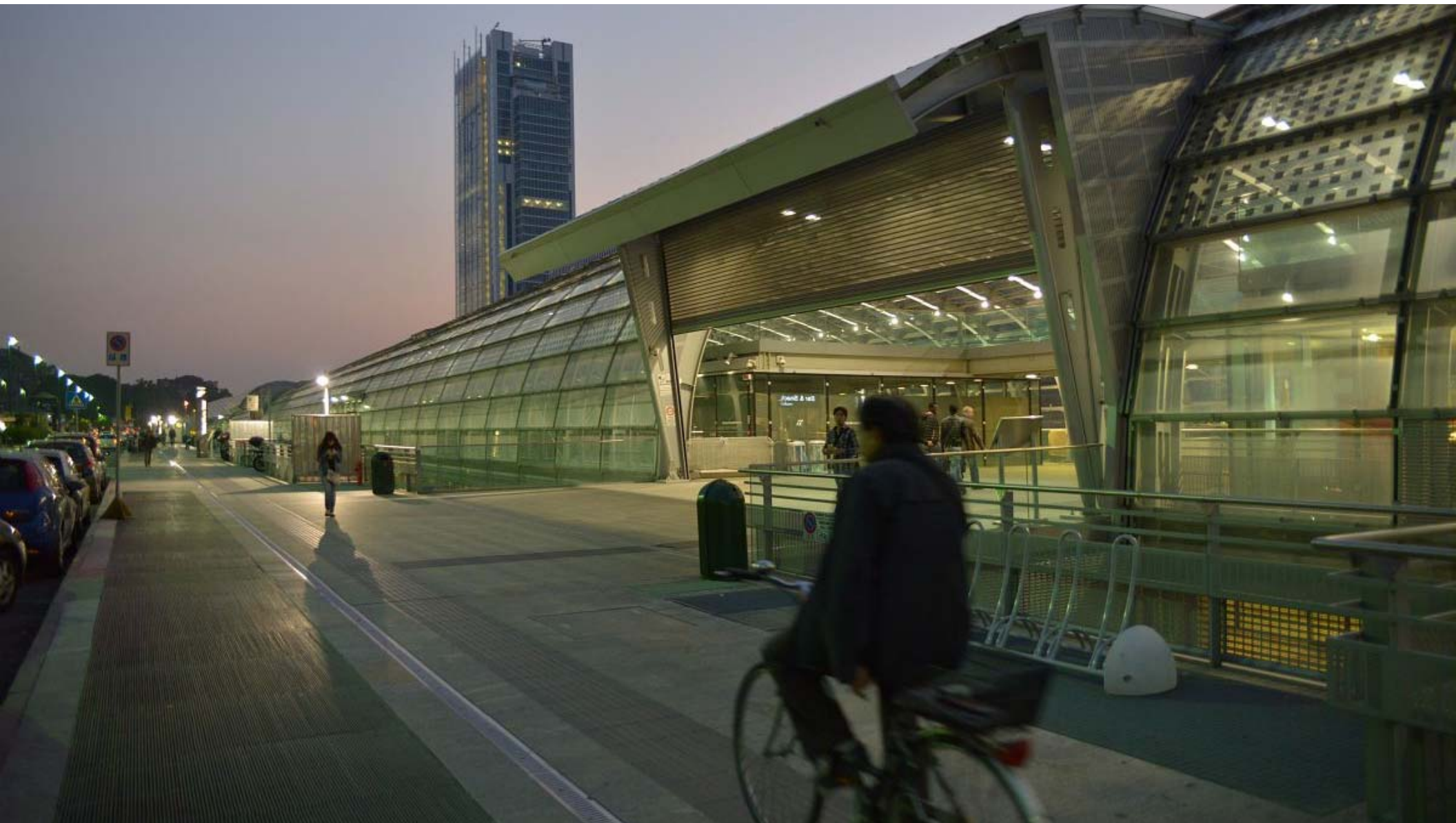












12. The Station as a City Booster

(The Rebirth of the Railway Station : Phase 4)



**Lille-Europe
International
High-Speed
Rail Station
1994**



Lille-Flandres Station

Retail center
Offices
Conference center
Hotels
Residential units

Pedestrian link

Lille-Europe TGV Station

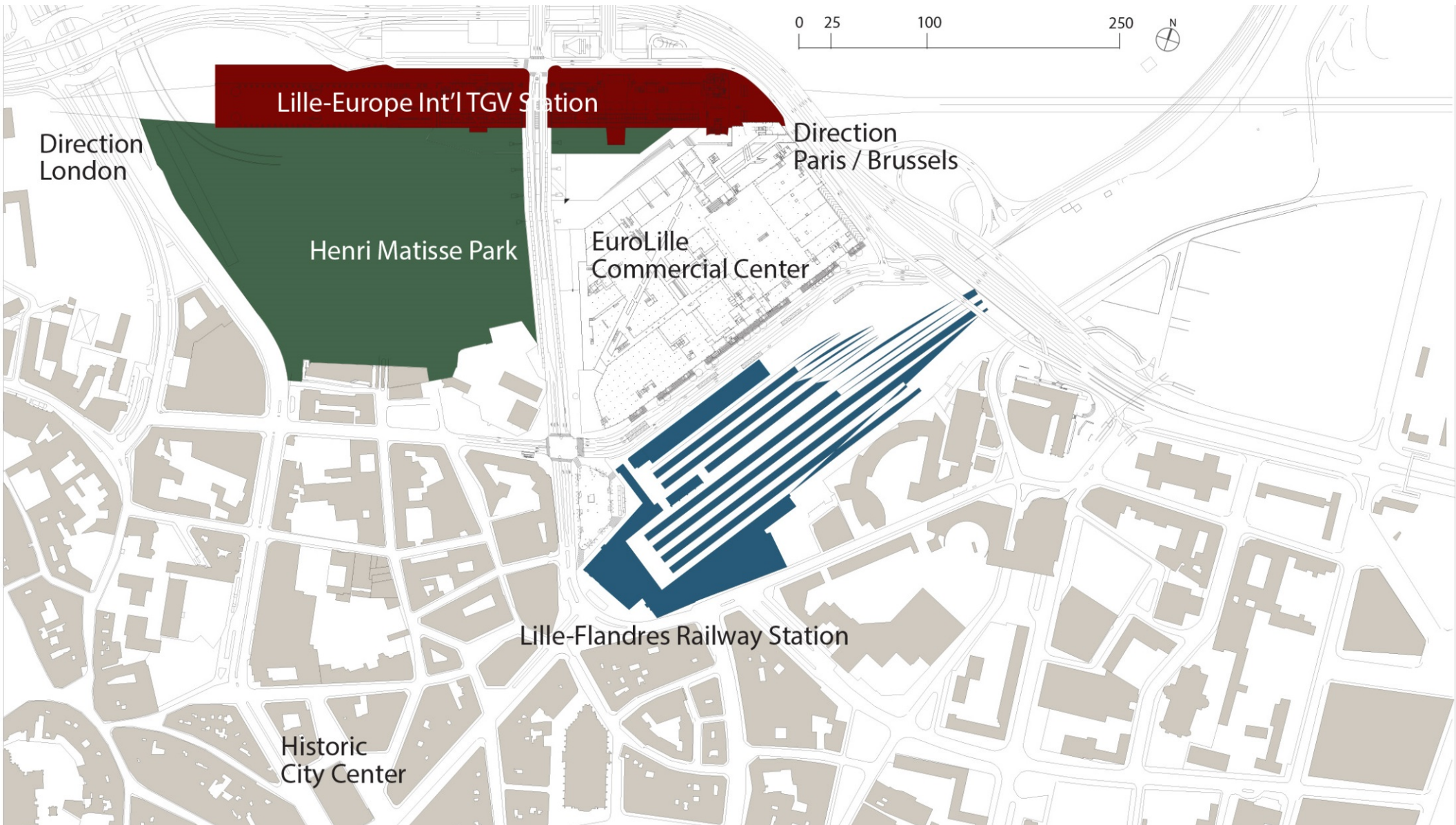
Tram

Metro 1

Metro 2







Lille-Europe Int'l TGV Station

Direction
London

Henri Matisse Park

EuroLille
Commercial Center

Direction
Paris / Brussels

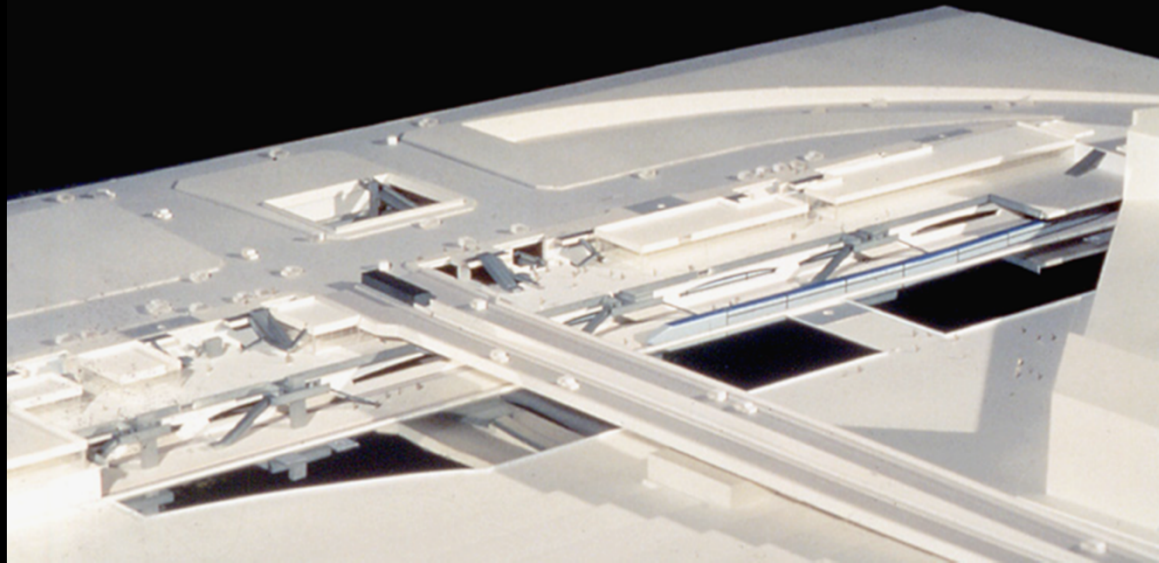
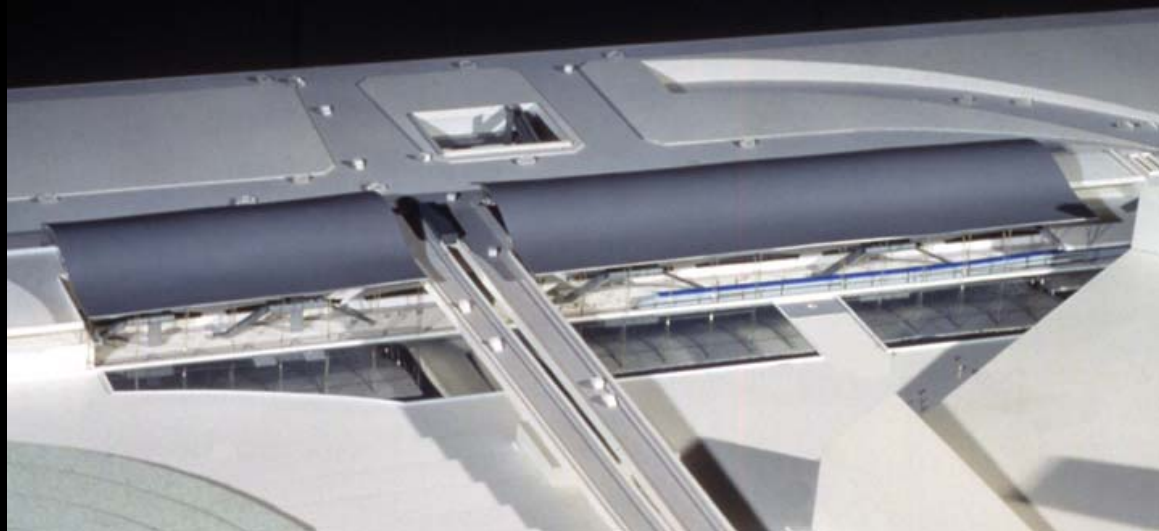
Lille-Flandres Railway Station

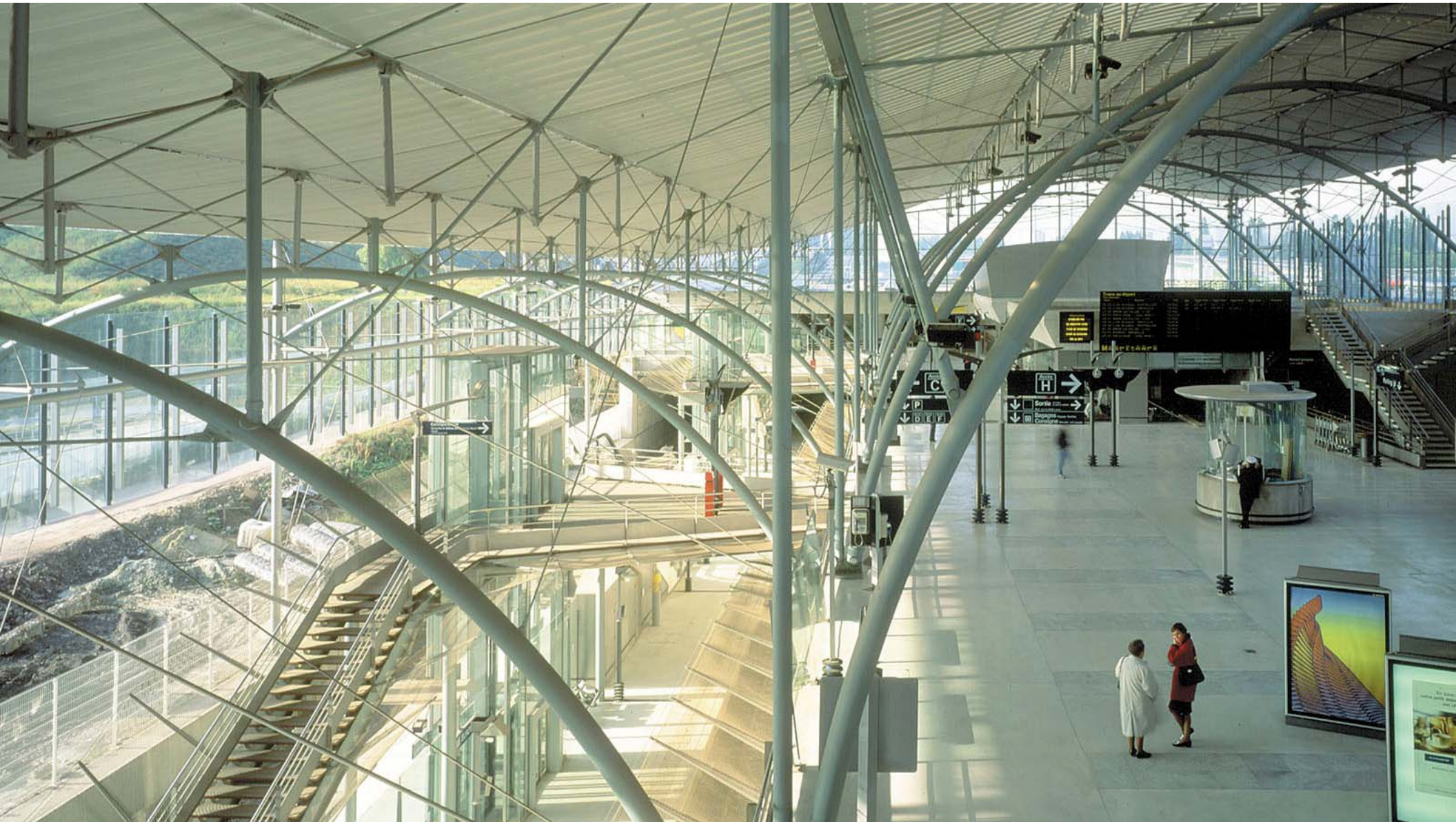
Historic
City Center











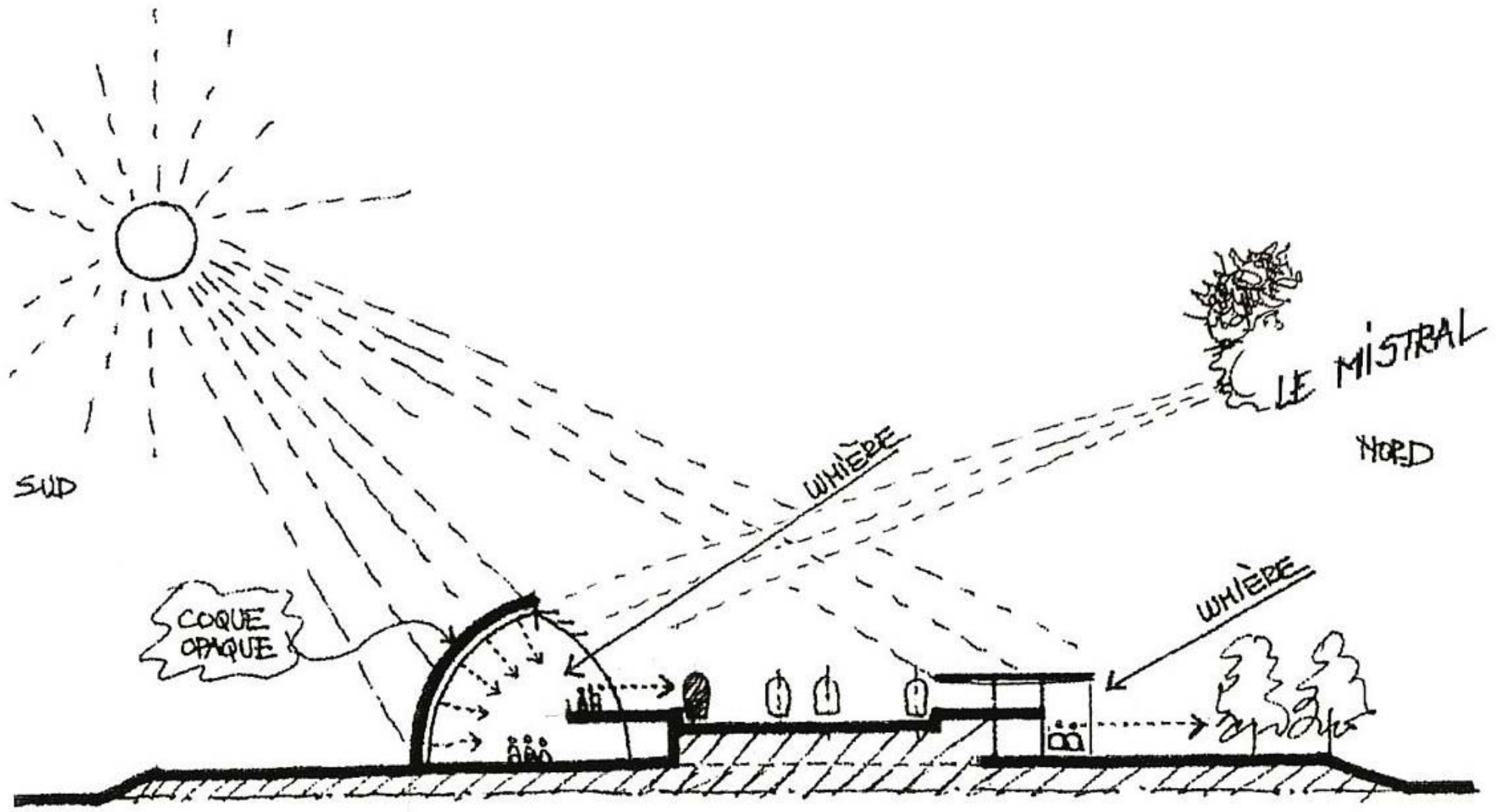
Avignon TGV Station 2001











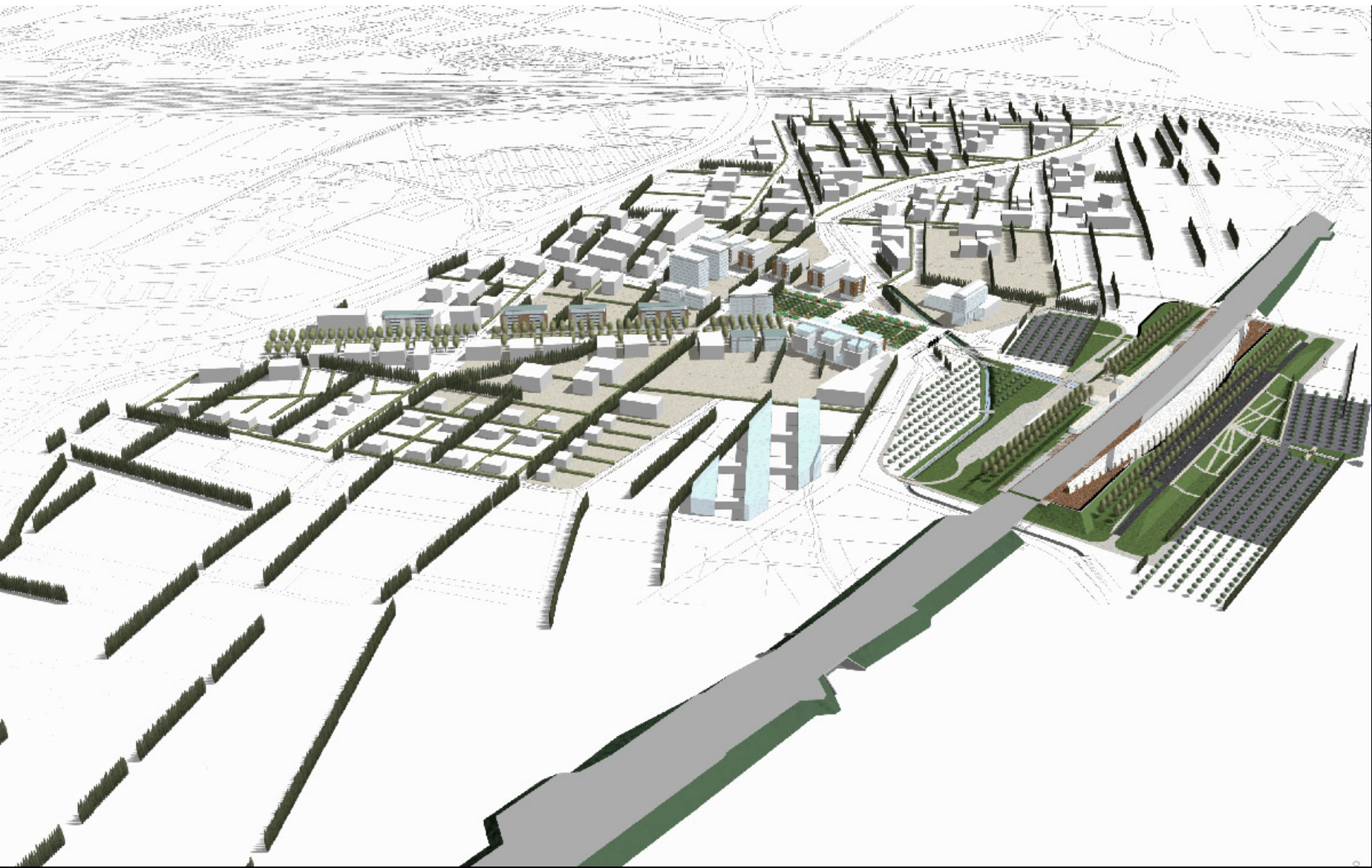
















Avignon TGV Station
AREP photo





Paris – Rive Gauche

Around 2012

SEMAPA

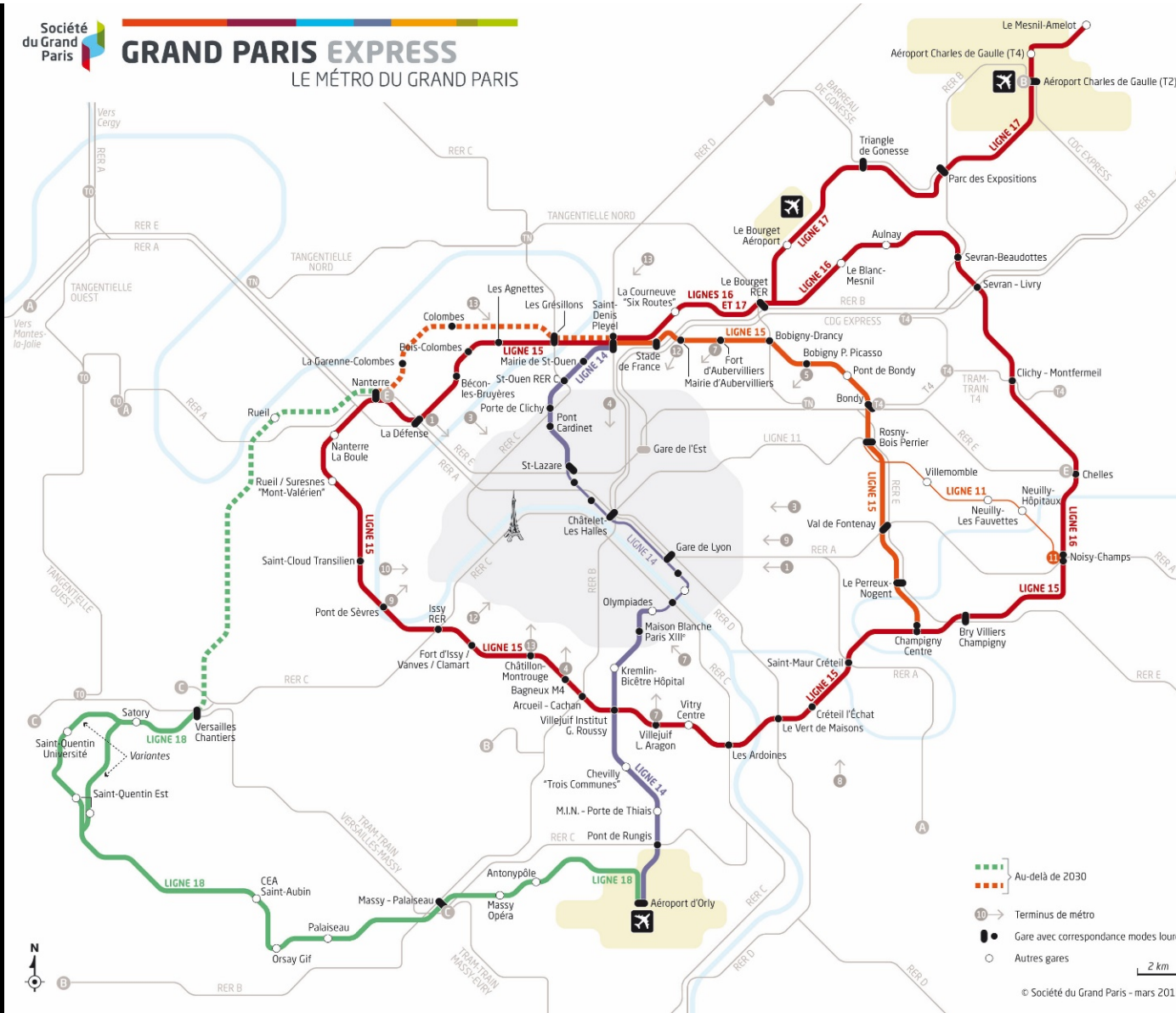


Paris – Rive Gauche

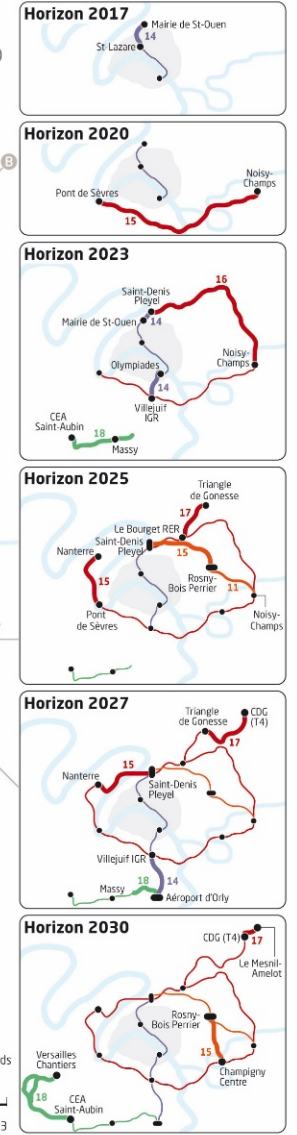
Around 1995

SEMAPA

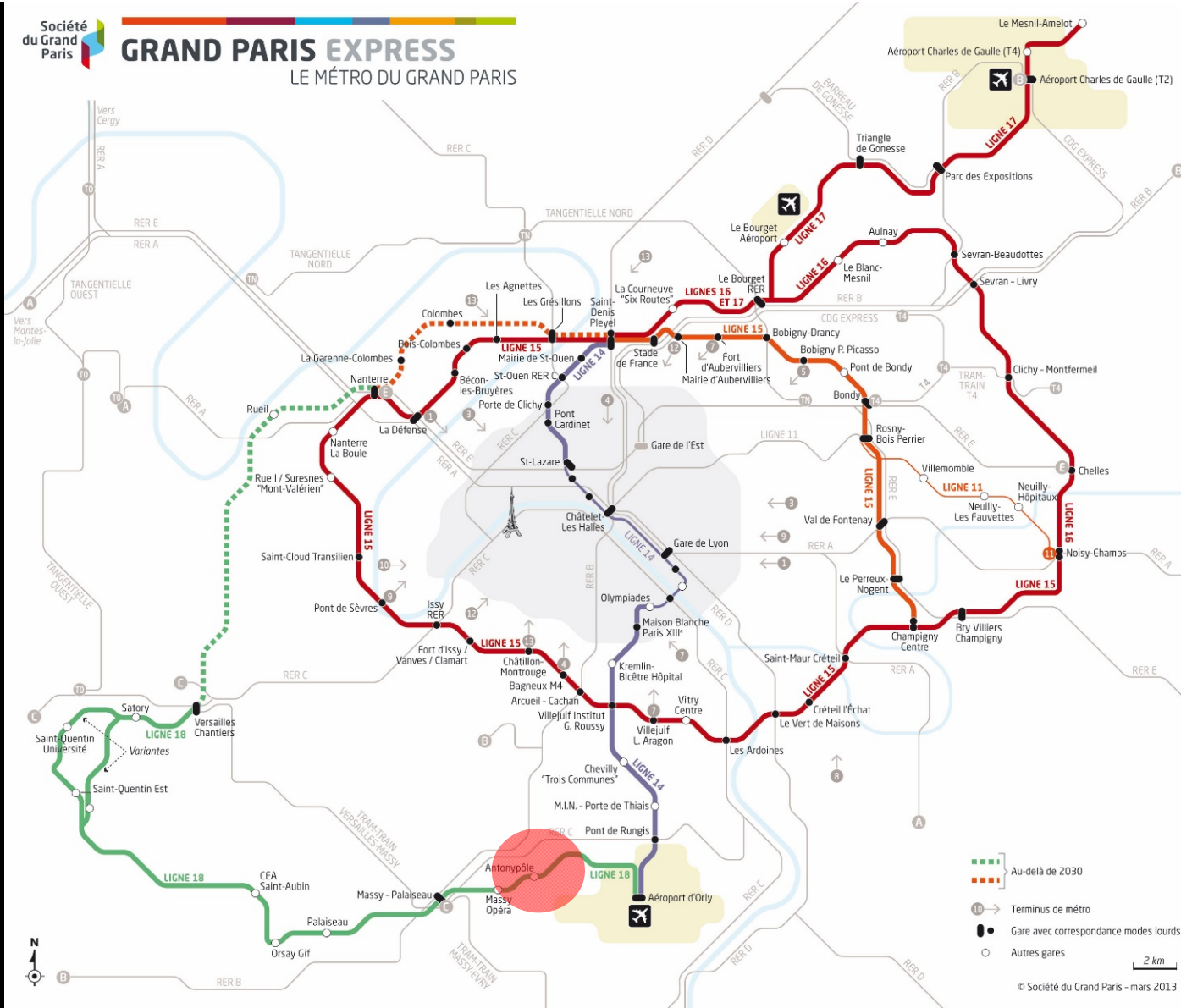
Photo by Mason Hicks



Objectifs de mises en service



■ Au-delà de 2030
■ Terminus de métro
● Gare avec correspondance modes lourds
○ Autres gares
 2 km
 © Société du Grand Paris - mars 2013



Objectifs de mises en service



- Au-delà de 2030
 - 10 → Terminus de métro
 - Gare avec correspondance modes lourds
 - Autres gares
- 2 km
- © Société du Grand Paris - mars 2013



Grand Paris – Antonypole Development



Grand Paris – Antonym Development

Casa-Port Railway Station and Sidi-Belyout District 2014

Casablanca, Morocco



28/7/2014

0 300m 300 m

DERB OMAR © 2014 Google
Image © 2014 DigitalGlobe

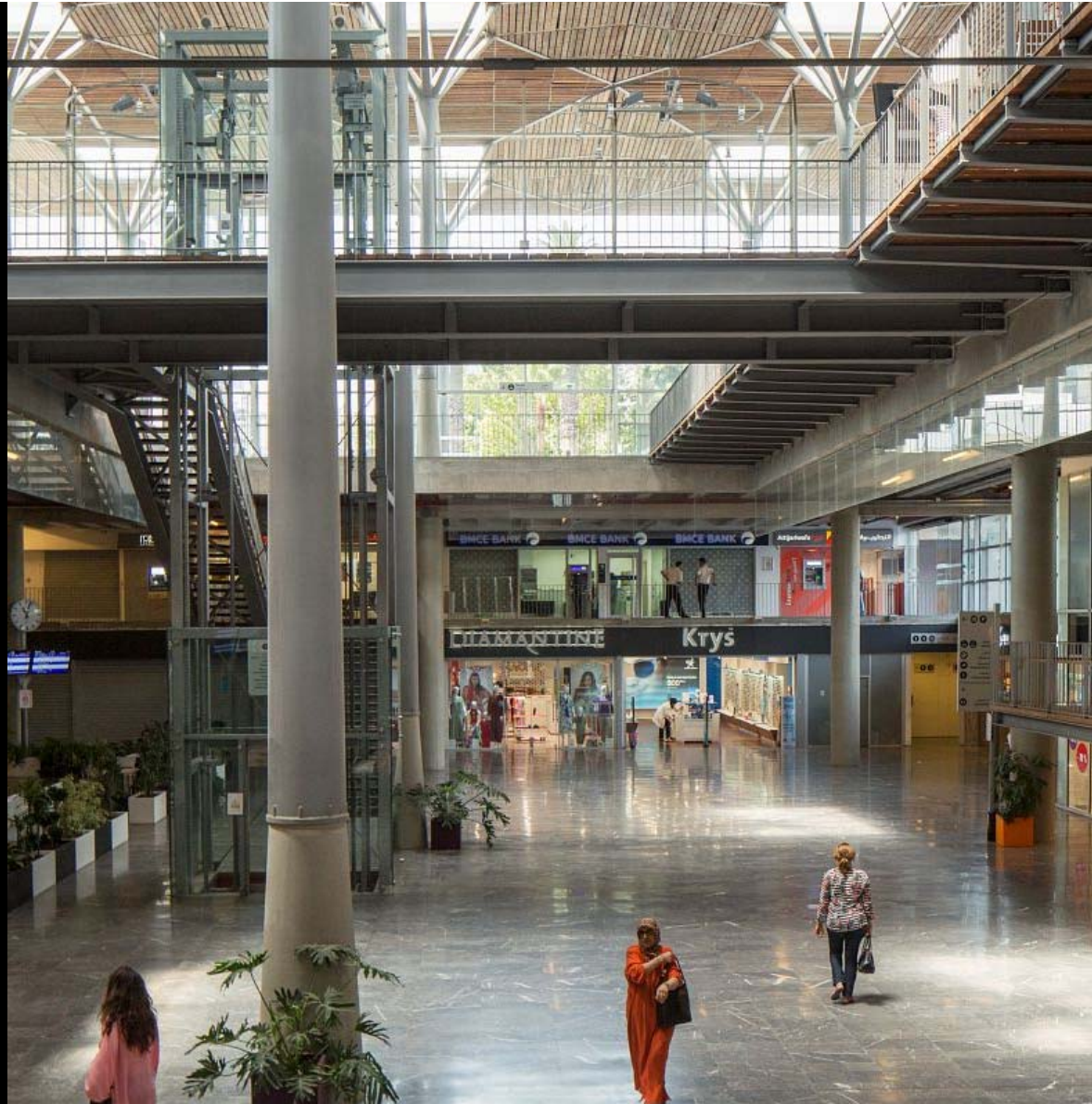


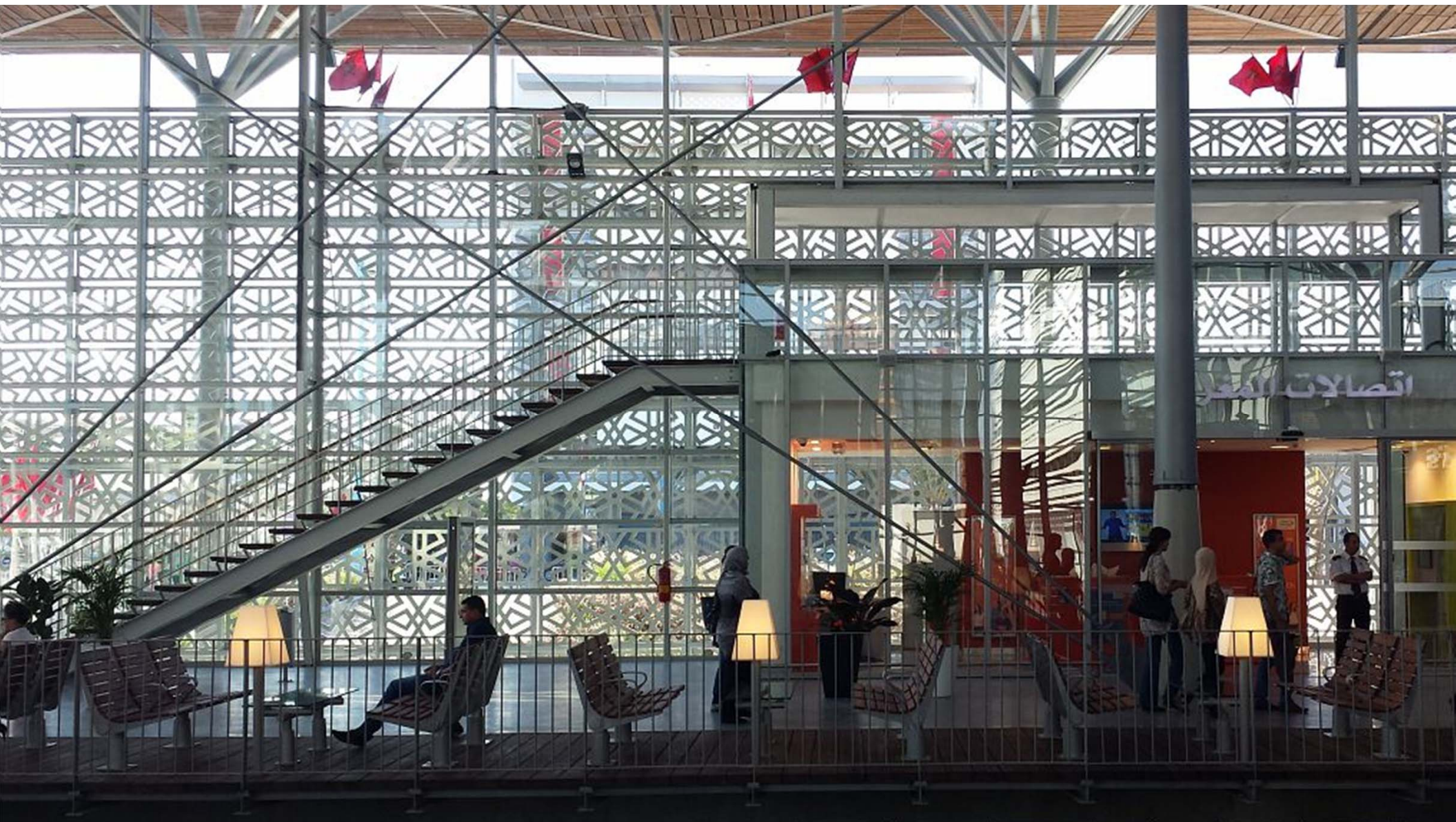


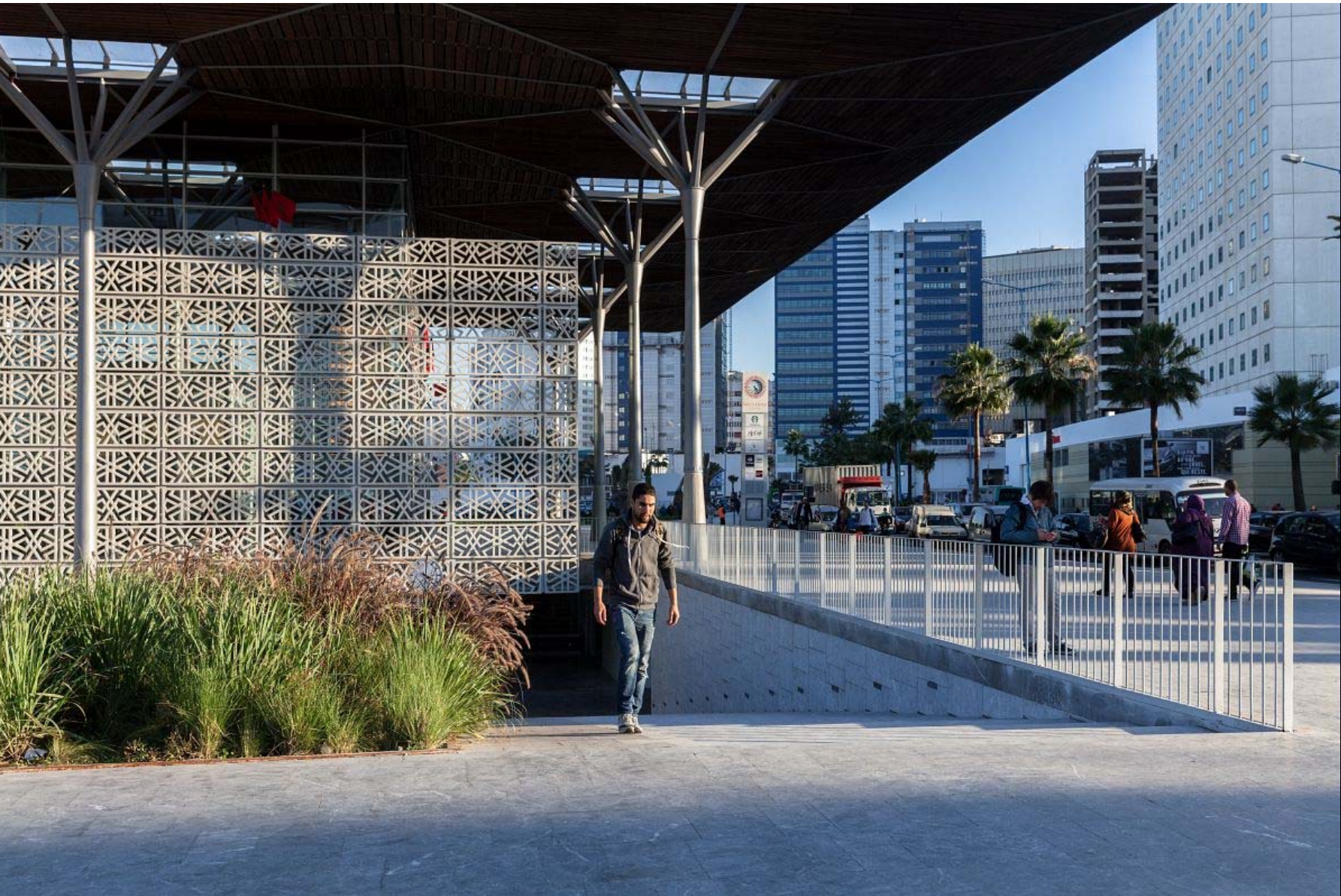












28/7/2014

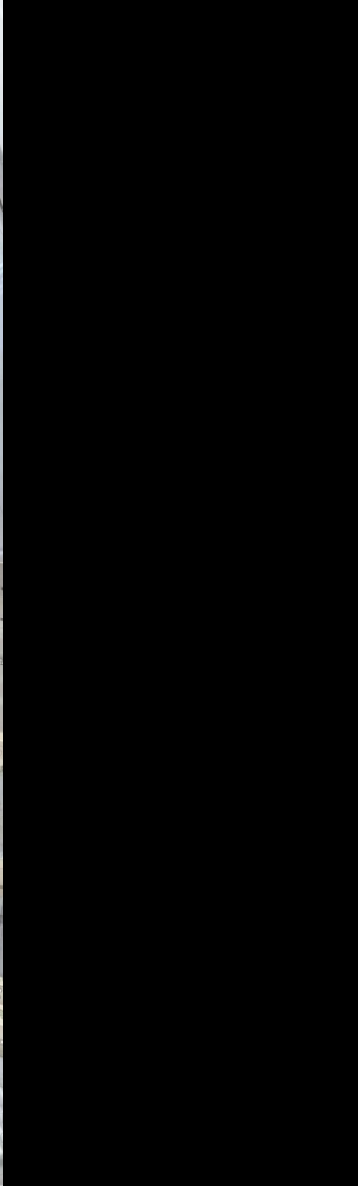
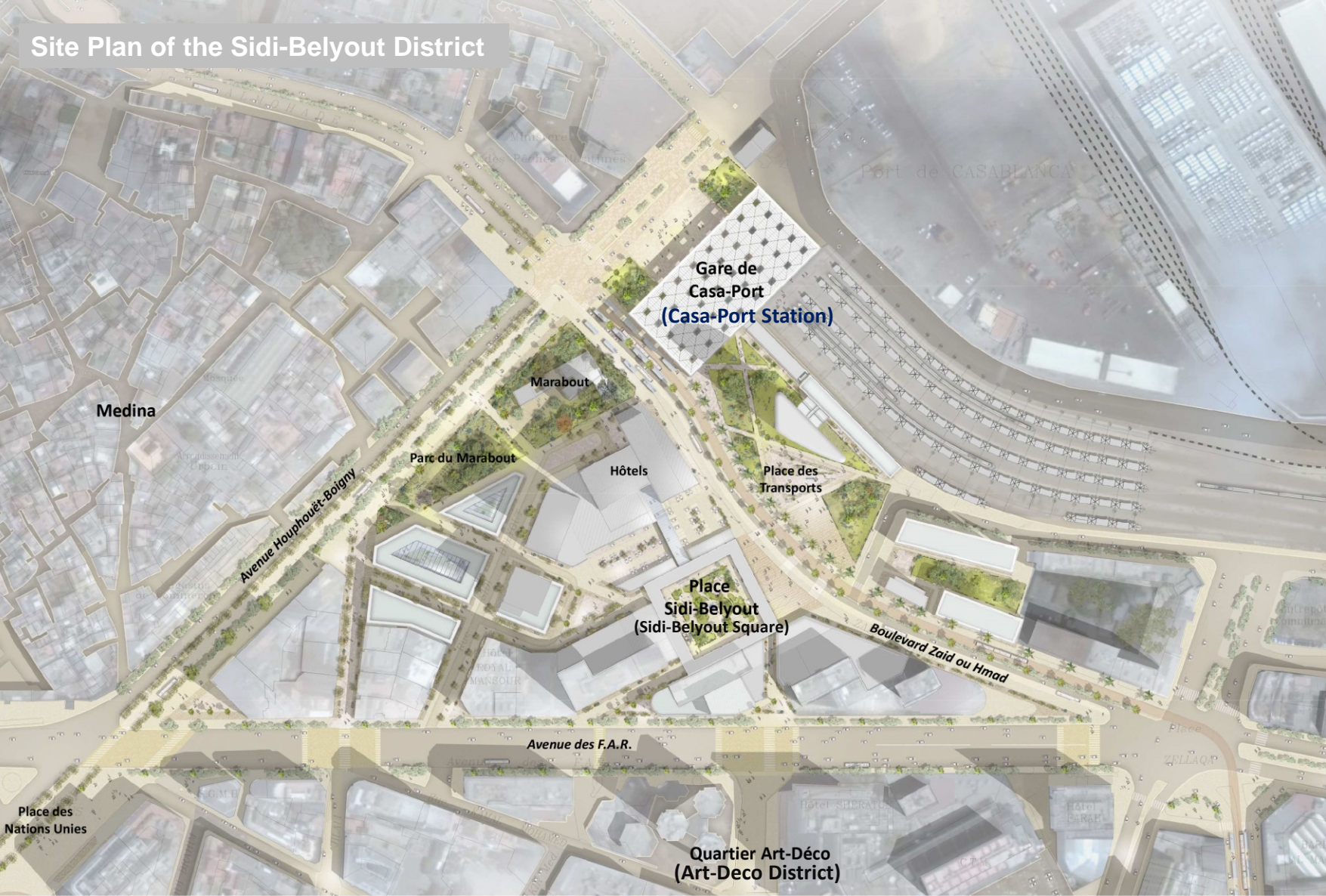
2014

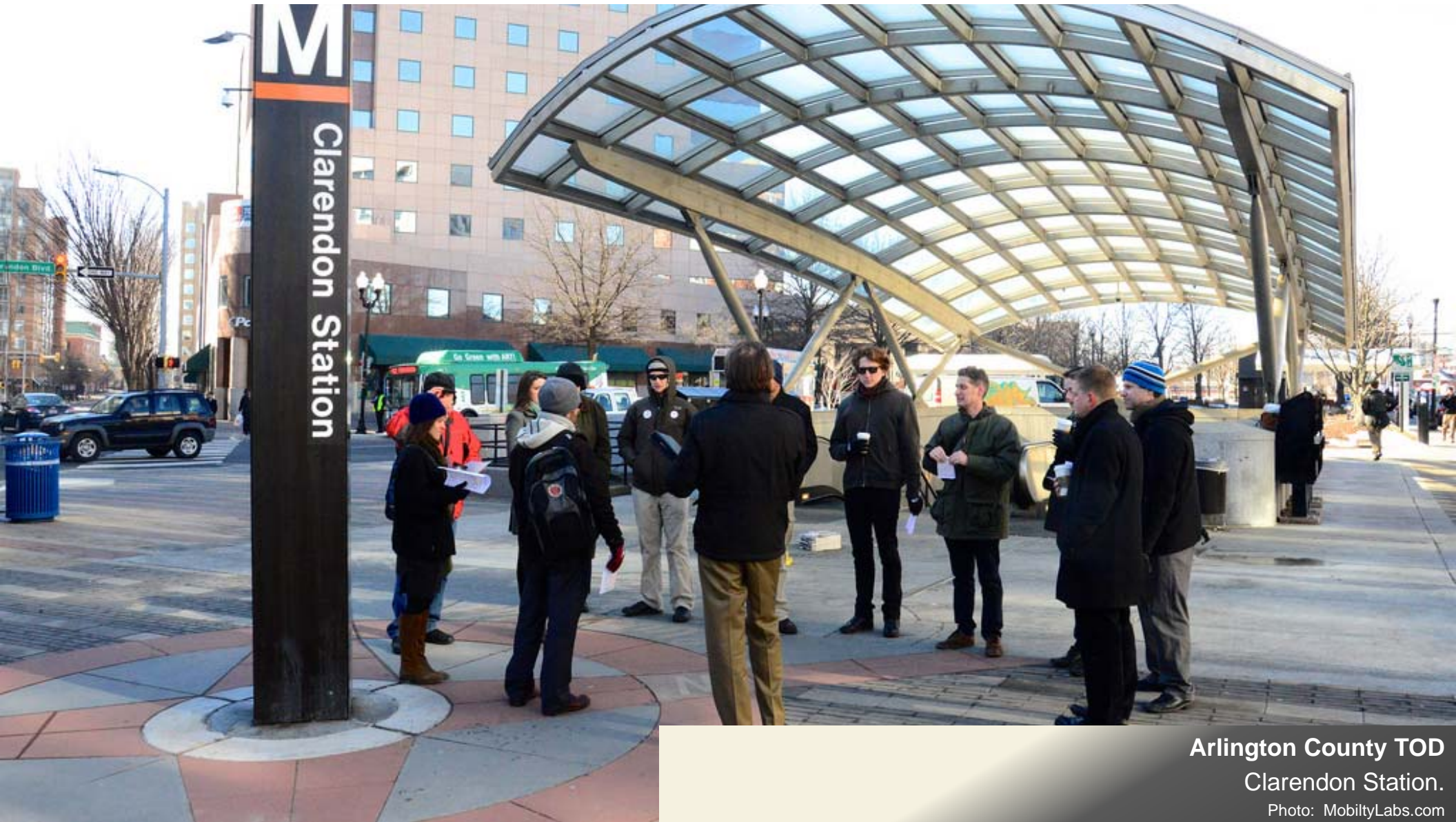


DERB OMAR © 2014 Google
Image © 2014 DigitalGlobe



Site Plan of the Sidi-Belyout District





Arlington County TOD
Clarendon Station.
Photo: MobiltyLabs.com



Arlington County TOD
Arlington County, Virginia.
Photo: Wikipedia.com



Hudson Yards - NYC

photo Related Real Estate and Oxford Properties;
posted on designboom.com



Construction of 10 Hudson Yards

KPF - Architects

Image posted on Front Inc's website



**Decking over the West-side
Yard's entrance
10 Hudson Yards**
Metropolitan Transit Authority
Image posted Tectonic Engineering



Philadelphia 30th Street Station

2015

Architect - Urban planner: **SOM**



Philadelphia 30th Street Station

2015

Architect - Urban planner: **SOM**



**Washington Union Station
and Burnham Place**
2015
WUS Second-Century Partners



**Washington Union Station
and Burnham Place**

2015

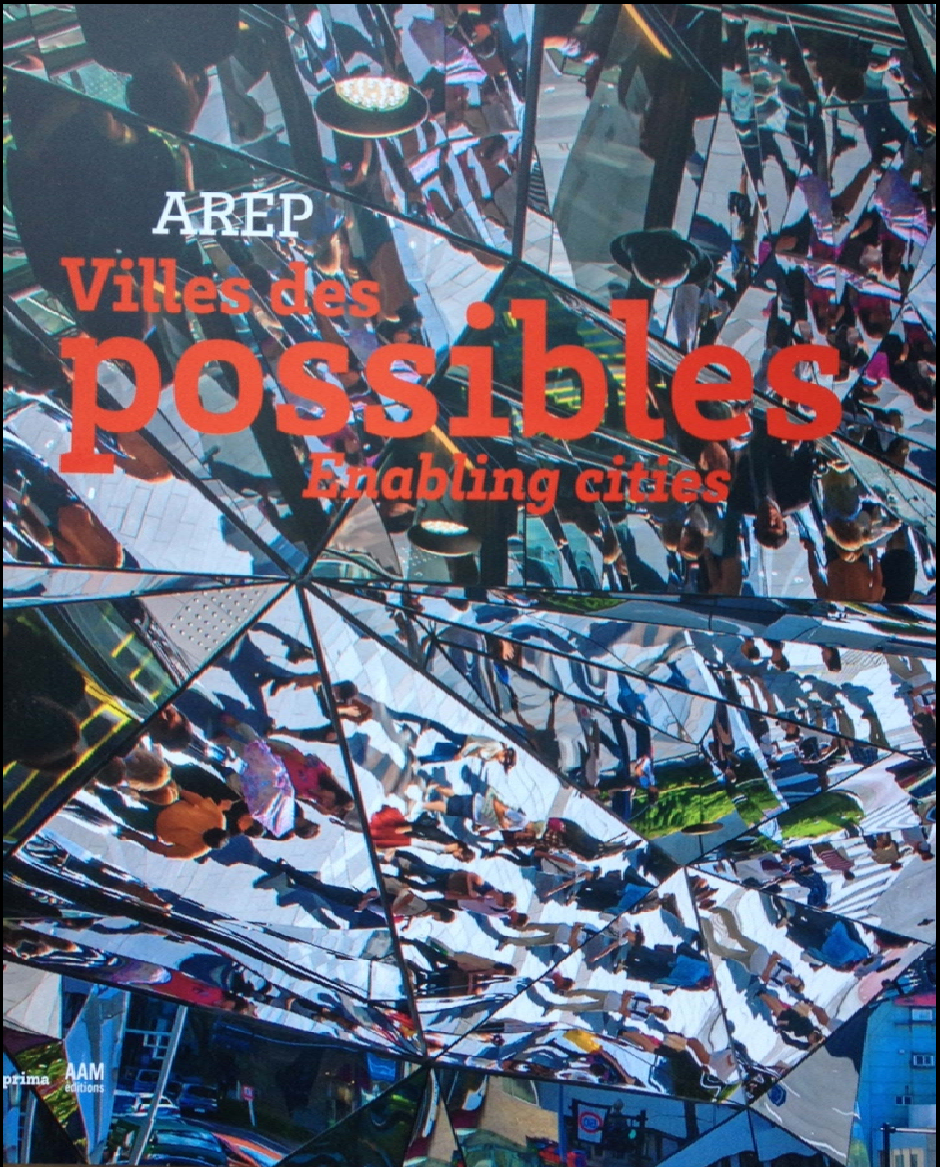
WUS Second-Century Partners

MAJOR TRANSIT COMPONENTS

-  LIGHT RAIL PLAZA
-  BELOW-GRADE BUS TERMINAL
-  COMMUTER RAIL TERMINAL
-  HISTORIC UNION STATION BUILDING
 - Commuter Rail Ticketing & Waiting areas
 - Adaptive Re-Use as the Union Station Hotel
- F** FREIGHT RAIL LINE
- C** CHESTNUT PAVILION
- G** 17TH STREET GARDENS
- W** WEWATTA PAVILION
- P** PEDESTRIAN BRIDGE



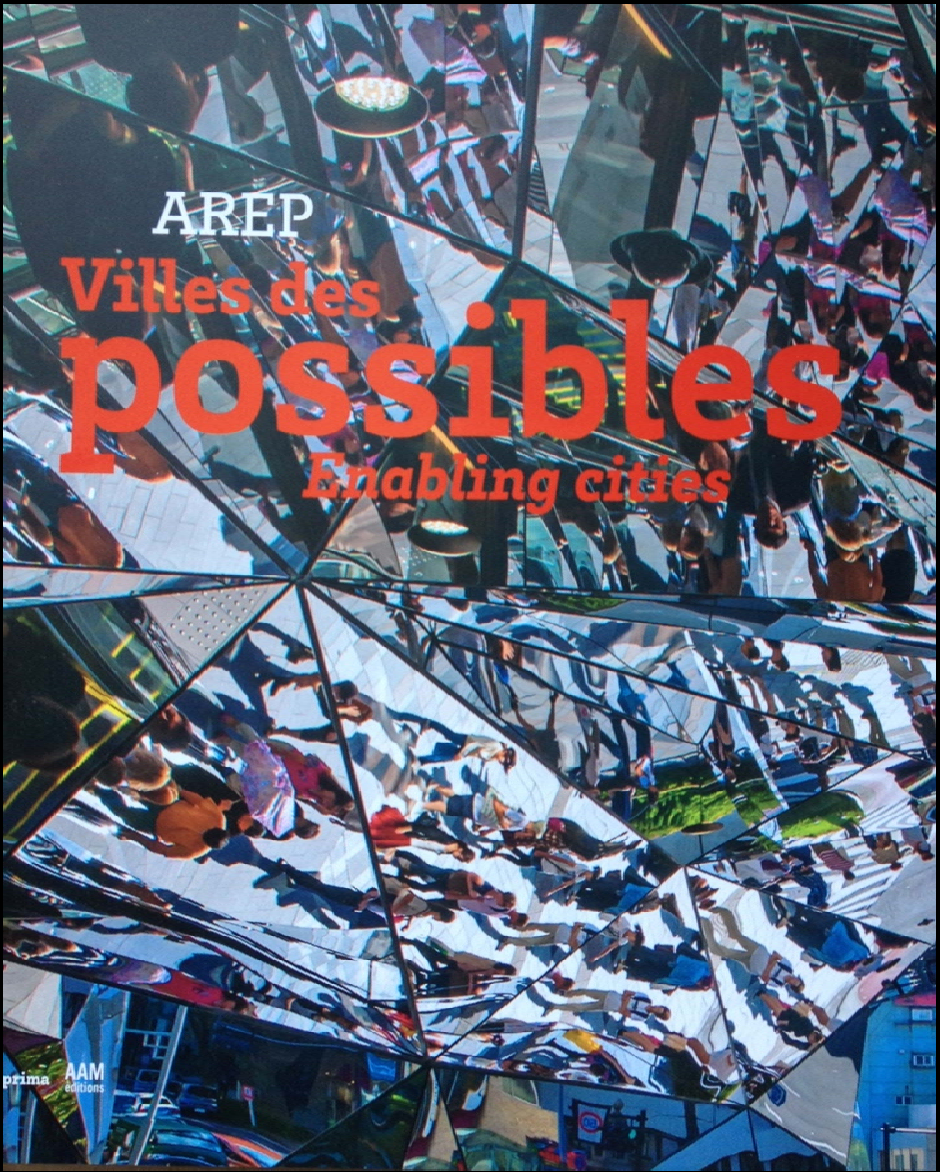
Denver Union Station
2015
Architect • Urban planner: SOM



AREP

Villes des
possibles
Enabling cities

prima
AAM
emissions



Merci !
Thank you !



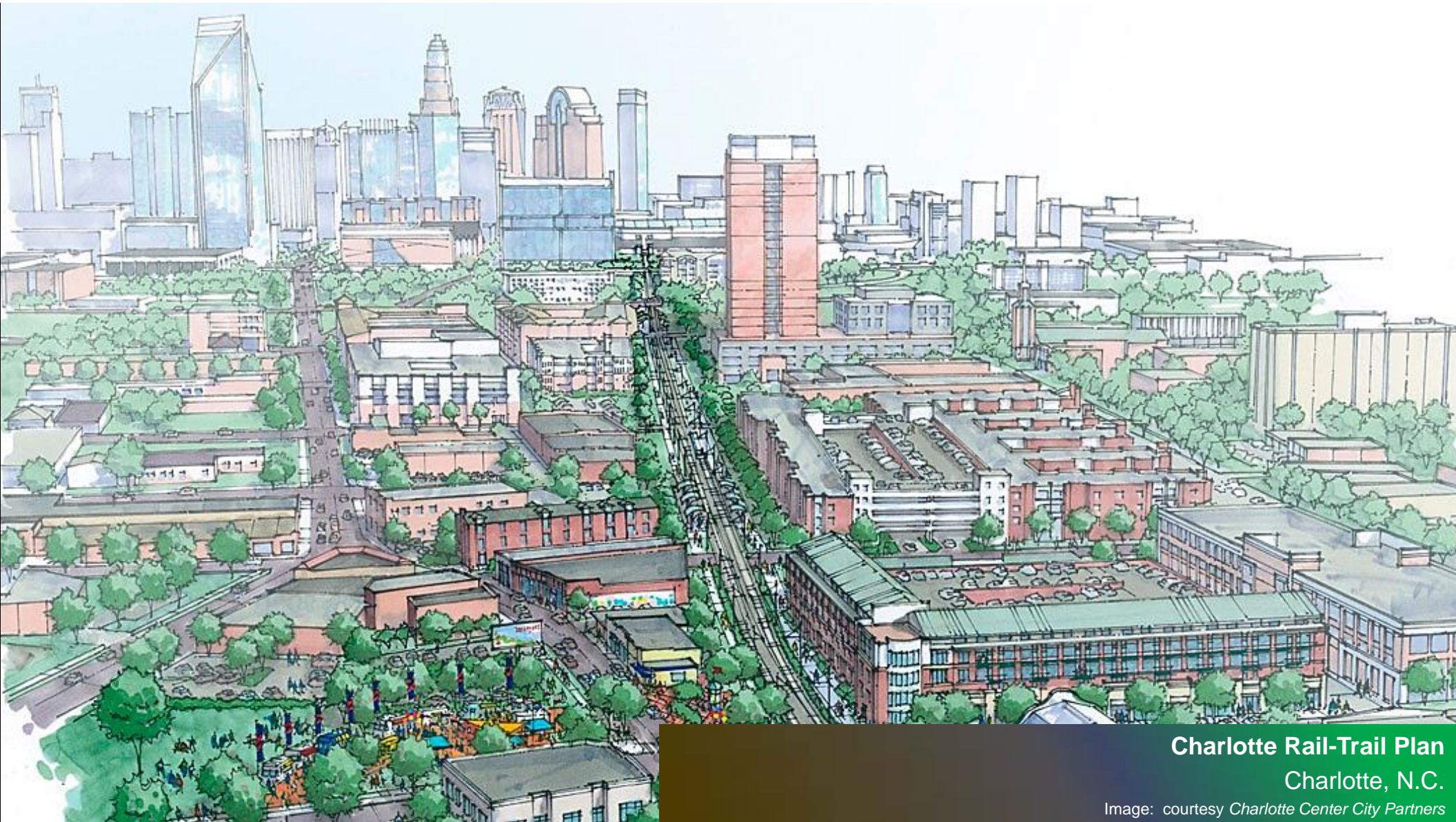


Cleveland Union Terminal
Now, the
Tower City Center



Lynx - Blue Line
Charlotte, N.C.

Photo: courtesy *Charlotte Area Transit System (CATS)*



Charlotte Rail-Trail Plan
Charlotte, N.C.

Image: courtesy *Charlotte Center City Partners*



Light rail and heavy rail platforms
at San Diego – Santa Fe Depot

photo posted to Flickr.com ; © NABOB



Del-Mar Station

Pasadena, California

photo courtesy the Congress of New Urbanism



Marine Gateway TOD

Vancouver, British Columbia

© Perkins + Will Architects and Planners

The Challenges Ahead



Construction of Transbay Center

Early 1890s

SPUR photo



Durand Union Station, Durand Michigan - 1918

Photo: courtesy DurandUnionStation.org

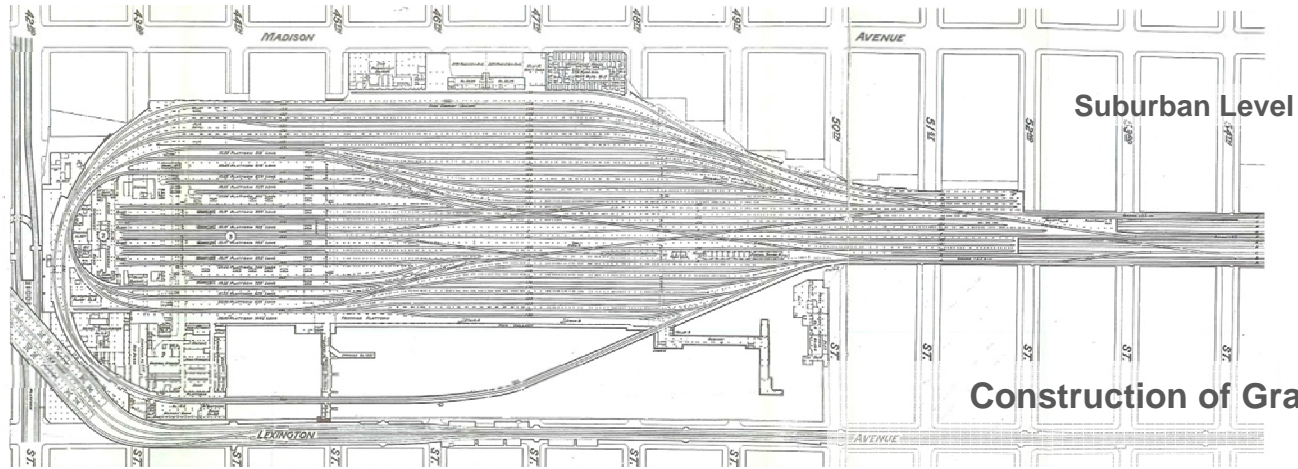
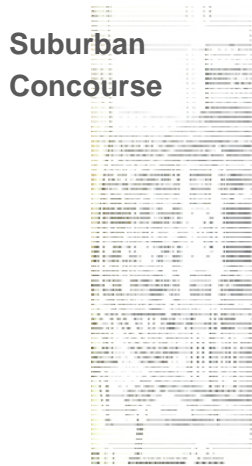
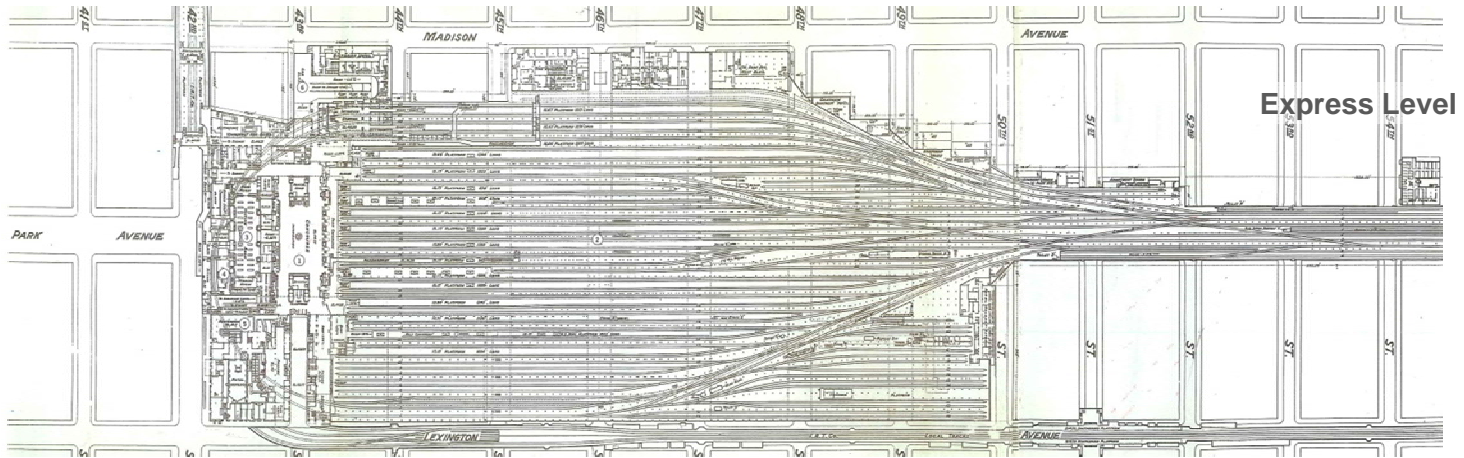
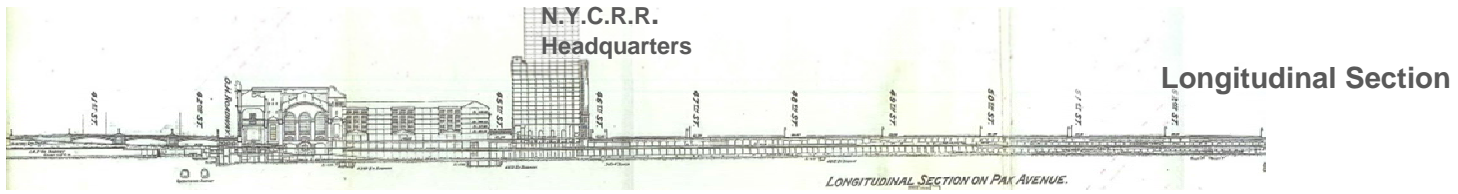
**Visionary Thinking:
The city transforms...**

From an early age –
The New York Central
Railroad and Park
Avenue.



Construction of Grand Central Terminal -1908

photo from SHORPY.com



Construction of Grand Central Terminal

Drawings dated 1931
New York Public Library



Kansas City Union Station



Cincinnati Museum Center at Union Terminal



Norfolk and Western 'J' Class, No, 611

Photo: courtesy the Virginia Museum of Transportation



Philadelphia 30th Street Station



Kansas City Union Station



San Diego - Santa Fe Depot

Photo: © PDF Photography



San José - Diridon Station

Photo: Wikimedia.com



The *Morning Hiawatha* departs
Cleveland Union Terminal
1936



Buffalo Central Terminal



Detroit – Michigan Central Station



Great Stations Lost Forever

Demolition of Penn Station
1964



Boston North Station

Photo: © Detroit Publishing



New York-Pennsylvania Station

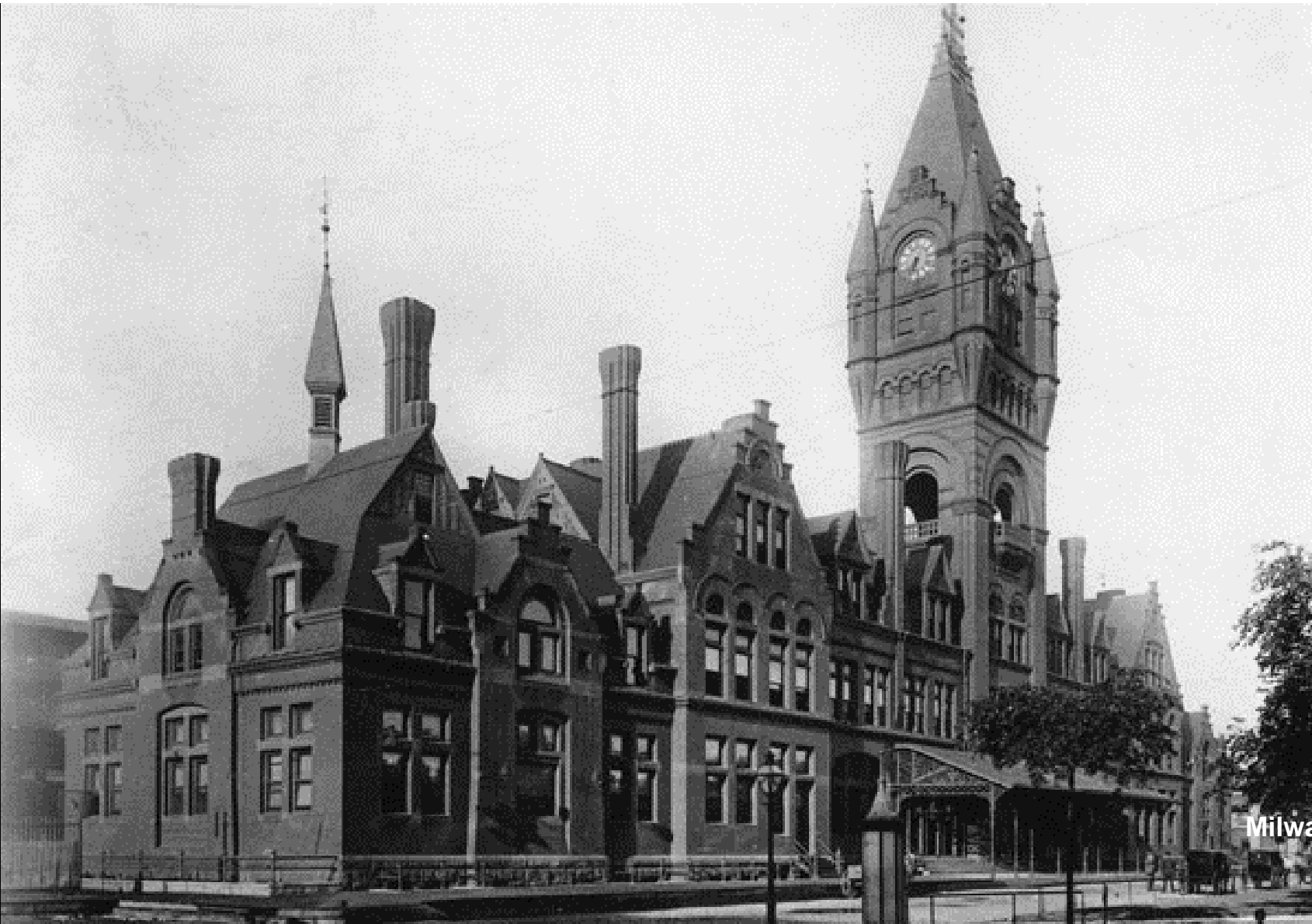
Architects: McKim, Mead, and White

Photo (1910s) by Detroit Publishing

© Library of Congress



New York-Pennsylvania Station
Architects: McKim, Mead, and White
Photo (1935) by Berenice Abbott
©New York Public Library



Milwaukee Union Depot

Photo: Old Milwaukee.org



**Atlanta Terminal
Railway Station
(Demolished 1972)**

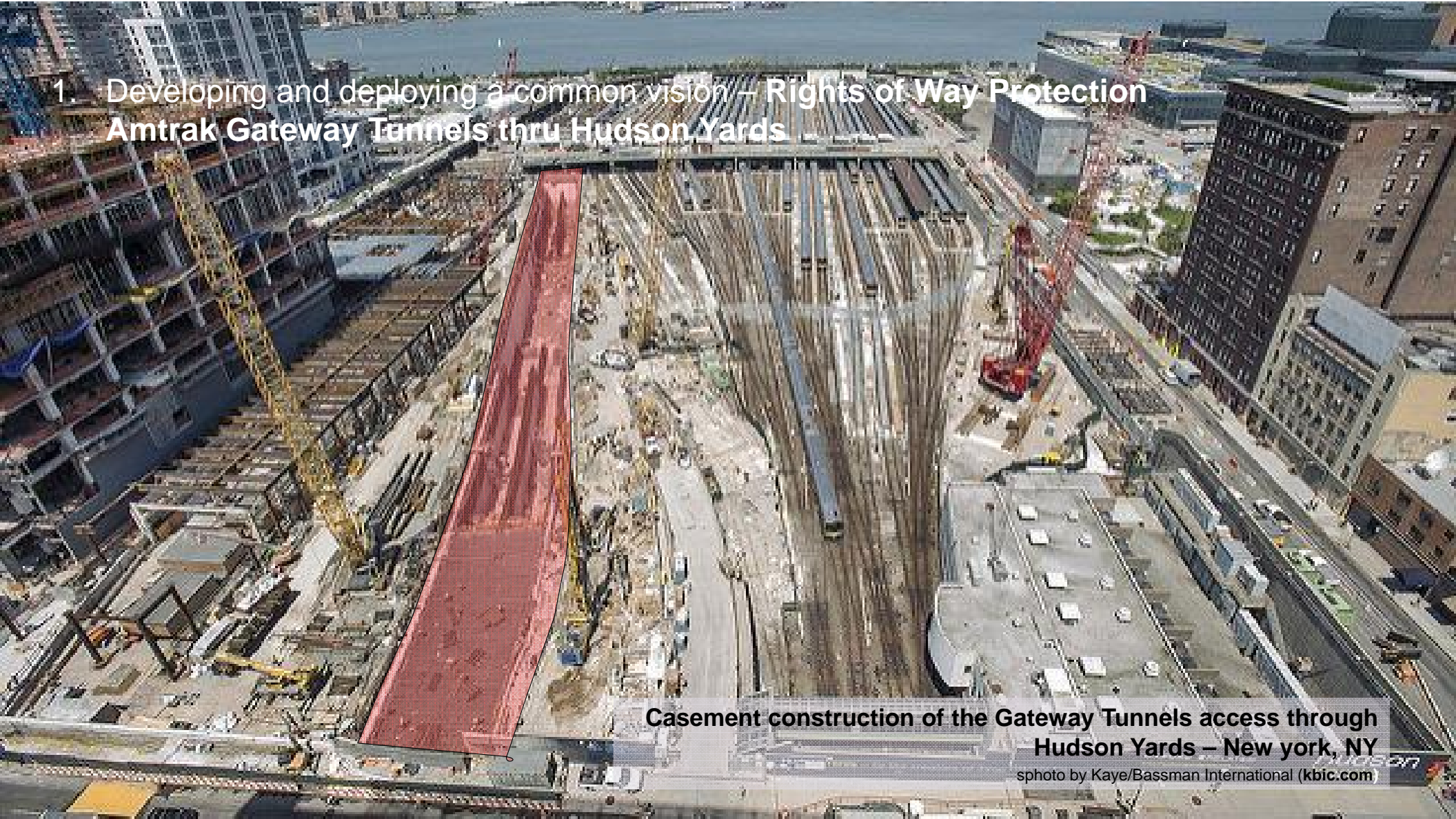


1. Developing and deploying a common vision – Rights of Way Protection
Amtrak Gateway Tunnels thru Hudson Yards

Casement construction of the Gateway Tunnels access through
Hudson Yards – New York, NY

photo by Kaye/Bassman International (kbic.com)

1. Developing and deploying a common vision – Rights of Way Protection
Amtrak Gateway Tunnels thru Hudson Yards



Casement construction of the Gateway Tunnels access through Hudson Yards – New York, NY

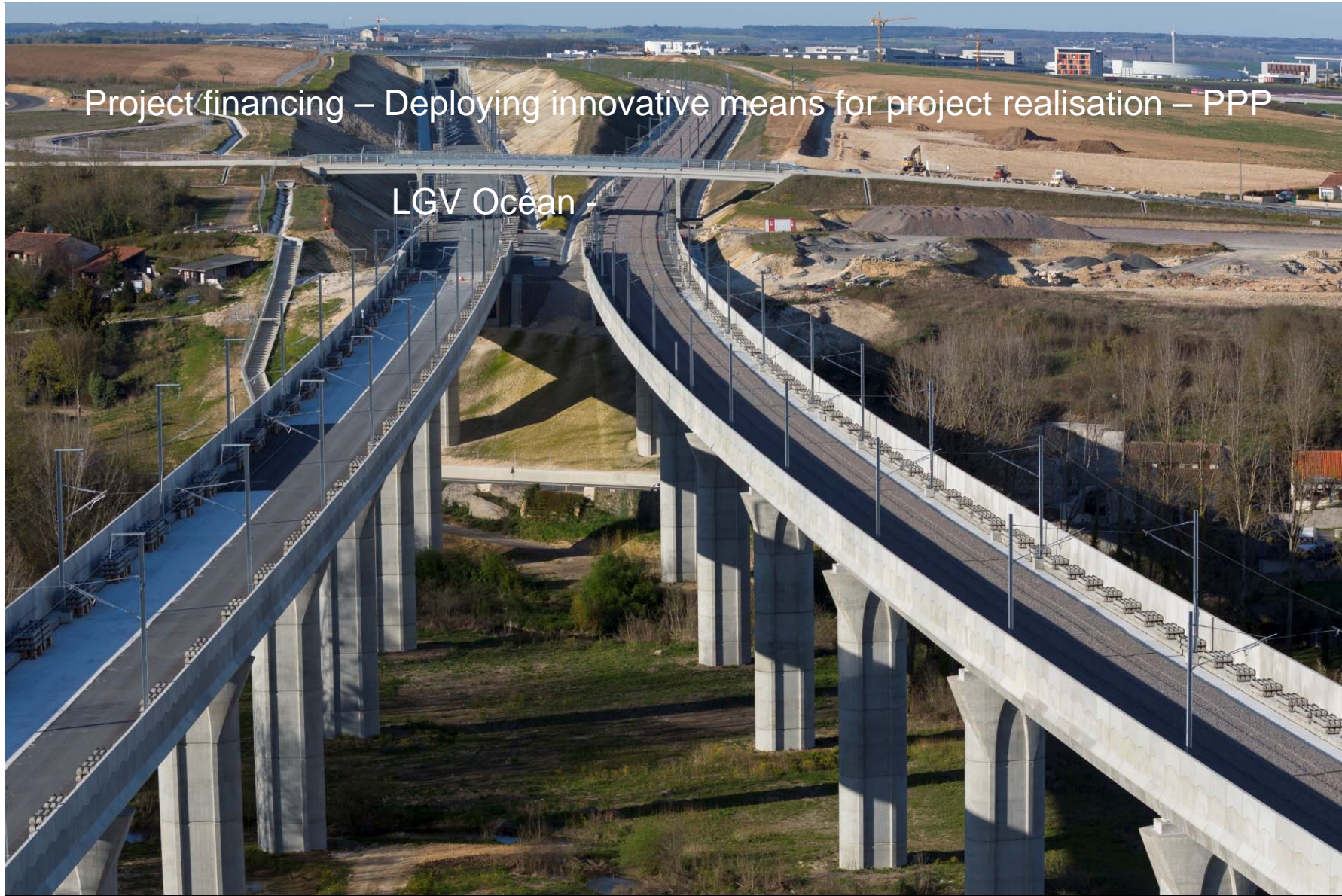
photo by Kaye/Bassman International (kbic.com)

A Public-Private Partnership : Saint-Lazare Multimodal Hub Redevelopment:

- **Project cost: 203.4 Million €** (+ additional 20.8 M€ for parking facilities)
- **40-year PPP** agreement (subject to review after 15 years). After that period the entire project will go back to the SNCF
- **SNCF (project owner)**, responsible for passenger service facilities
- **Klépierre-SEGECE (private development partner) finance 75% of construction cost (124.2 Million €)**, responsible for merchandizing and retail operation (10000 m² of retail)
- **Benefit Sharing** : Private partner pays a fixed-fee to SNCF over the 40 years for commercial “rent and maintenance charges of public spaces“, and will pay a variable % yearly, based on the commercial center's revenue

Project financing – Deploying innovative means for project realisation – PPP

LGV Océan



Conclusion





**Bonne
Anniversaire
à
NARP !**

from

AREP